

# **The Postal History of Abeokuta**

**Dr Simon Heap**

**West Africa Study Circle,  
RPSL, London,  
14th March 2026**

# The Postal History of Abeokuta

West Africa Study Circle, RPSL, London, 14th March 2026

Dr Simon Heap

## 1<sup>st</sup> Frame

Abeokuta is located in the SW of present-day Nigeria, slightly to the west of a straight line between the two mace-cities of Lagos and Ibadan. It is on the River Ogun; indeed, Abeokuta is the capital of Ogun State.

My interest in Abeokuta started as a doctoral student on visits to the Egba archives.

Postcards of the early 20<sup>th</sup> century and magazine drawings.

Architecture from natural products to corrugated iron.

Calls for a postal service

Abeokuta : 20<sup>th</sup> largest city in Nigeria

## 2<sup>nd</sup> Frame (16)

Lagos and Southern Nigeria stamps.

Socked on the nose

The earliest known date: 16th August 1899

Covers and cards

Stamp sales, pillar box and Lagos Government Railway

## 3<sup>rd</sup> Frame (16)

Christianity and churches, and local scenes and women.

Cosmopolitan Correspondence Club (CCC): Harry Edwards of Paterson Zochonis (PZ). CCC was founded in America and was a kind of penpal system for stamp collectors. It used female names as a code for which countries they collected. There was a South Sea Islands Correspondence Club in the 1930s, Any other West African territories with such mail?

## 4<sup>th</sup> Frame (14)

CCC: cards from around the world.

## 5<sup>th</sup> Frame (15)

1910s to 1925

Branch offices:

**Igbein Hill – Abeokuta**

**Imo-Abeokuta**

**Ibara back to Abeokuta in 1936/**

**6<sup>th</sup> Frame (16)**

**Edward, Prince of Wales visit to Nigeria, including stretching his legs at Abeokuta**

**1926-36 covers to London, Billingshurst, Newcastle and Edinburgh, as well as Austria, Germany, and Chicago,**

**Note 'Use Air Mail Services' cachet in 1936.**

**Some more snippets from the archives, including that Igbara became Abeokuta.**

**7<sup>th</sup> Frame (16)**

**Arthur Evelyn Francis Murray, Colonial Officer – The Resident of Abeokuta**

**8<sup>th</sup> Frame (16)**

**Murray continued**

**Commemorative GV and then GVI stamps**

**2 Covers sent on 18th Aug 1939: one to Uk not censored, one to Switzerland censored**

**Lome to Abeokuta, 1942**

**9<sup>th</sup> Frame )(16)**

**1945-54**

**Postman delivery service**

**Internal mail: Nguru to Abeokuta.**

**Personal address on back, as well as commercial covers.**

**10<sup>th</sup> Frame (16)**

**QE2 covers**

**Forces Mail, 1956**

**Imo-Abeokuta**

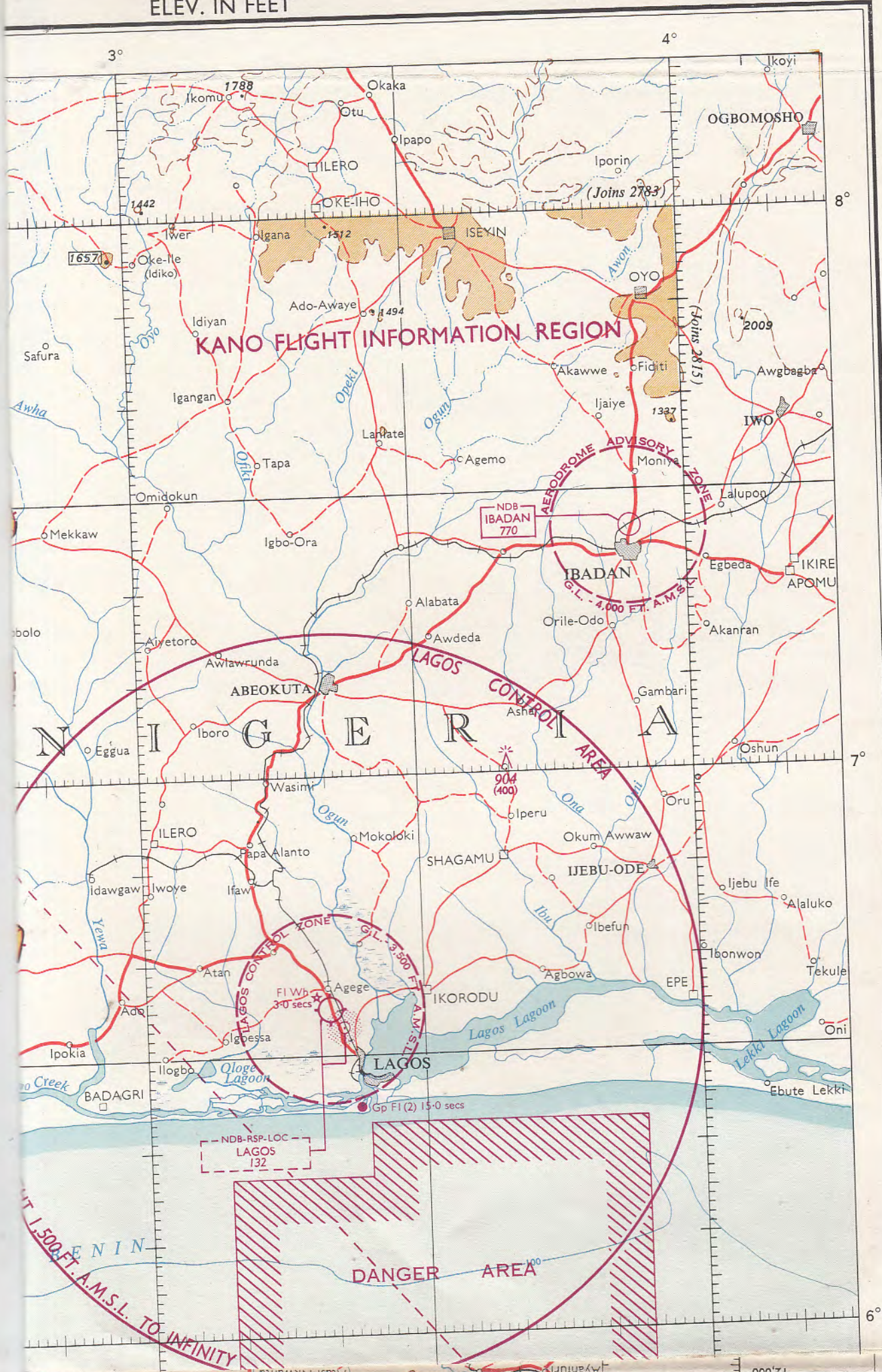
**11<sup>th</sup> Frame (14)**

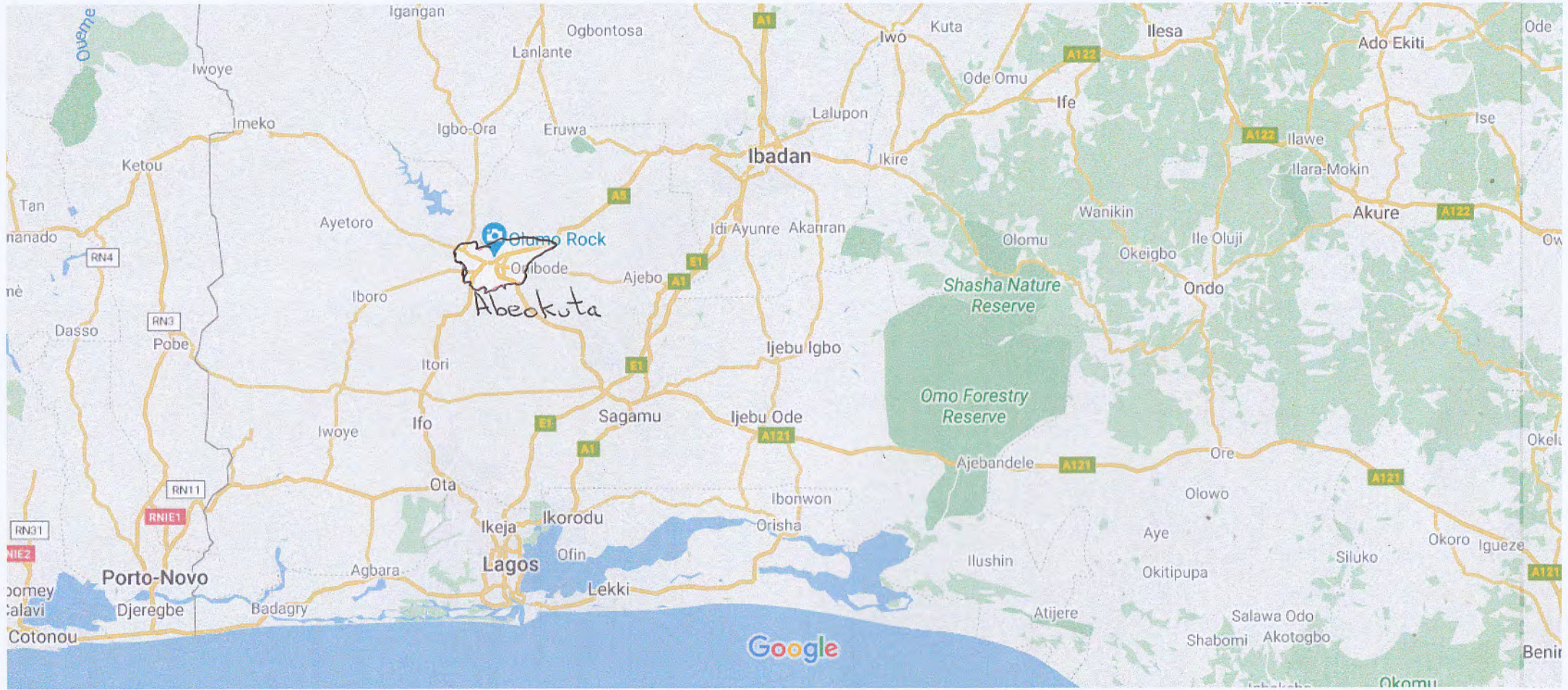
**Covers, 1960s and 1970s**

**12<sup>th</sup> Frame (13)**

**Cover, 1980s-2016.**

ELEV. IN FEET





# The Liquor Trade

A non-Yoruba group in Western Nigeria were the Egbas, centred on Abeokuta, whose inhabitants some commentators claimed were drinkers of note. Doctor Oguntola Sapara stated in early 1909: "At Abeokuta today the Egbas have become connoisseurs of Drink, and the sobriquets for the different kinds of Alcohol, for example, 'Erebe', 'Mafawo jeba', 'Egbangunyan' etc, hail from Egbaland.<sup>1</sup>

Reverend Ransome-Kuti compared hard-drinking, spirit-guzzling Abeokuta people who suffer "terribly" from the effects of drink, very unfavourably with the neighbouring Jebus, who refrained from much consumption of imported liquor, and were better off because of it.<sup>2</sup>

A German trader in the town commented, "the people are drinking abominably"; indeed, one observer claimed Abeokuta people drank the most alcohol in the whole of West Africa.<sup>3</sup>

Abeokuta, with its river and railway links, was a site of major liquor distribution. 2,000 cases of gin entered Abeokuta daily in 1905.<sup>4</sup> One trader sold 17,000 gallons of liquor in surrounding Egba villages in a month.<sup>5</sup>

One liquor critic saw hundreds of canoes coming down the Ogun river from Abeokuta to Lagos "laden with ivory tusks, gold, palm oil and the most precious products of the interior, and returning with nothing but filthy spirits".<sup>6</sup>

Thousands of empty gin bottles were scattered around the town itself, visible proof of liquor's significance to the local economy. Even a local church's pews were made out of empty gin cases, it was claimed.<sup>7</sup>

---

<sup>1</sup> 'Doctor Sapara on the burning social question of the day', *Nigerian Chronicle*, 19 February 1909, 2.

<sup>2</sup> Rev Josiah Ransome-Kuti, *Minutes of Evidence*, Questions 6,125-26, p. 171.

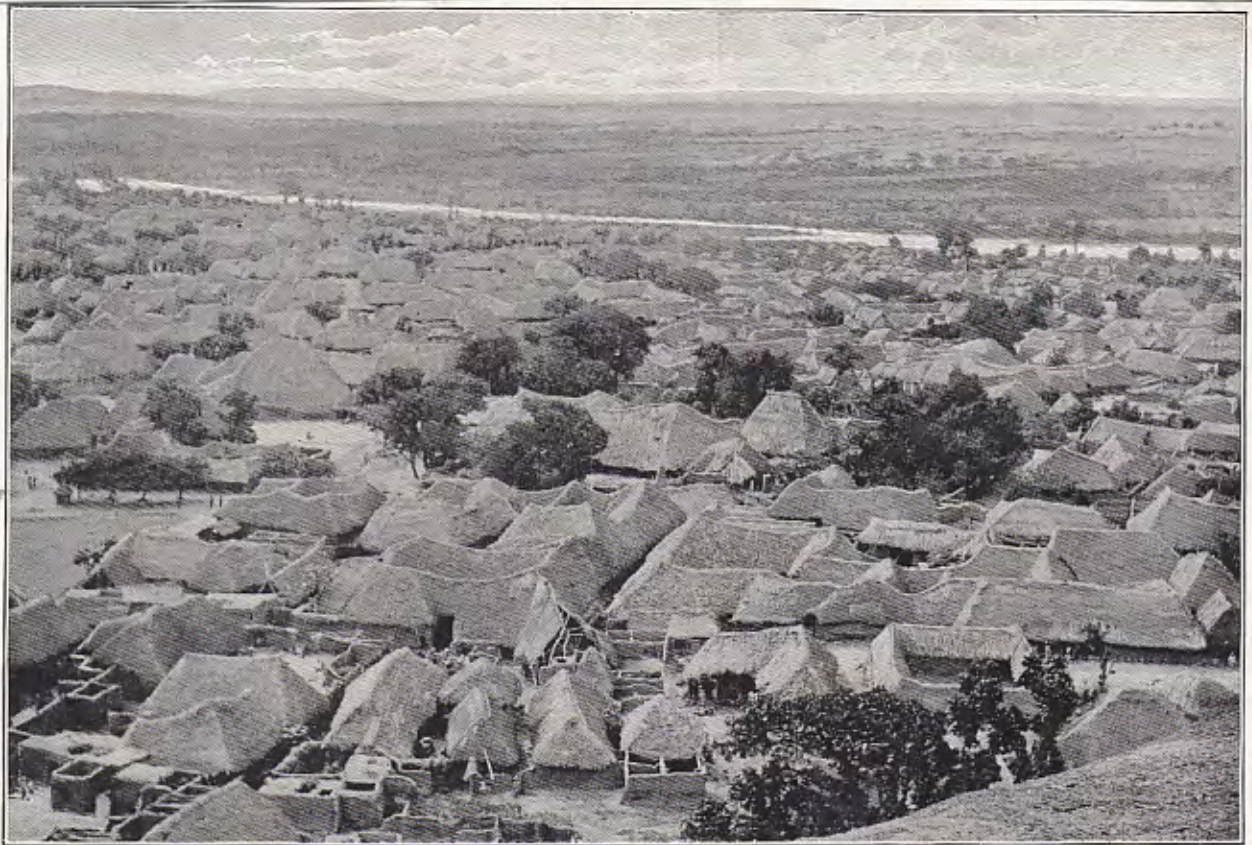
<sup>3</sup> Anon, *Does England really care for the Native Races*, 16; S. A. Jones, in PRO, CO 520/87, *Humble Memorial*, p. 10.

<sup>4</sup> NRLTUC (1905), *18th Annual Report, 1904-05*. London: NRLTUC, p. 20.

<sup>5</sup> Anon. (1908), *Does England Really Care for the Native Races in West Africa Committed to Her Care? Does She?* Newcastle: Doig Brothers, p. 18. See also W. MacGregor (1904), 'Lagos, Abeokuta, and the Alake', *Journal of the African Society*, 12, July, p. 470.

<sup>6</sup> Papers of Edward Benson, Archbishop of Canterbury, Lambeth Palace Library, London [Benson Papers], volume 74, p. 10, Benson, House of Lords, London, 6 May 1889.

<sup>7</sup> 'Abeokuta', *Lagos Standard*, 18 September 1895, 2.



Photos: 1, J. E. Livernois, Quebec; 2, Sir Gilbert T. Carter, K.C.M.G.

#### QUEBEC AND ABEOKUTA.

(1) Quebec, the historic and beautiful capital of Lower Canada, lies on the left bank of the broad St. Lawrence. Its situation is picturesque and striking. The ancient houses, quaint streets, and the existence of a large French-speaking population give it a marked individuality among the cities of North America. (2) The contrasts of the Empire are curious and sometimes startling. Abeokuta, in the Lagos Protectorate, has no doubt a history as moving in its way as that of the city of Quebec, for it is no mushroom settlement. On the contrary, this strange African town on the banks of the Ogun river is a walled city with a circumference of twenty miles and a population of no less than 200,000.



"Eguns" or sacred being supposed to have risen from the dead, passing along a road to Abeokuta. The Capital of the Egba Kingdom, Yoruba country, 1897.

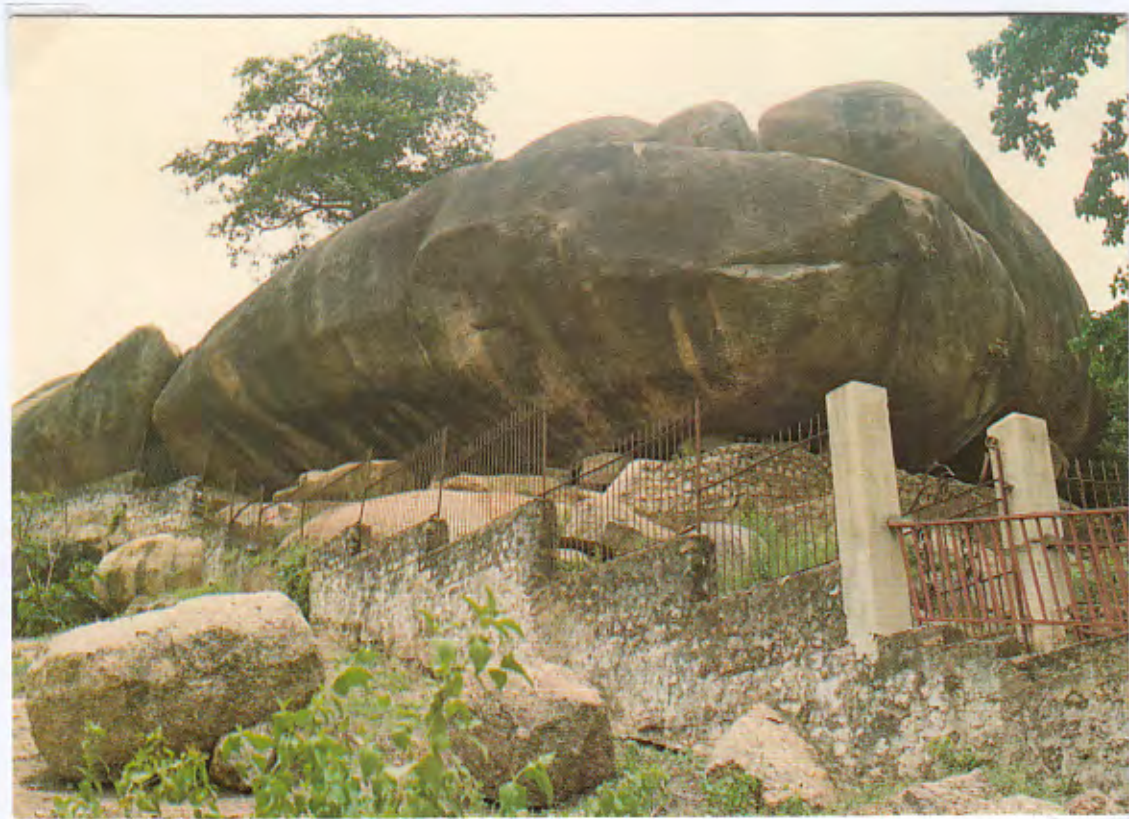


*Abeokuta from the Olumo Rock.*

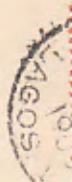


BIRD'S EYE VIEW OF SOUTH WESTERN SIDE OF  
ABEOKUTA TOWN FROM OLUMO ROCK.

Photo by J. B. Abimola  
P. O. Box 144 Ibadan.



Post Card.



*33*  
*John de Hecker*

*Irish*

*Germany*

*München*

*S. Paulstr. 11*



*17-2-04*

*Dunmighans*

Lagos. Abeokuta.

Post Card.



*J. K. L. Wyper Esq*

*PLSD*

*Accra.*  
*W. Africa*



Rank	City	State	2006 census	Total area		Population density	
				km <sup>2</sup>	sq mi	per km <sup>2</sup>	per sq mi
1	<i>Lagos</i> <sup>[a]</sup>	Lagos	7,099,490	1,151.1	444.4	6,871	17,800
2	<i>Kano</i> <sup>[b]</sup>	Kano	2,828,861	523.6	202.2	6,300	16,000
3	<i>Ibadan</i> <sup>[c]</sup>	Oyo	2,559,853	563.1	217.4	985.13	2,551.5
4	<i>Benin City</i> <sup>[d]</sup>	Edo	1,147,188	344.8	133.1	953	2,470
5	<i>Port Harcourt</i> <sup>[e]</sup>	Rivers	1,005,904	394.5	152.3	2,726	7,060
6	<i>Aba</i> <sup>[f]</sup>	Abia	1,002,265	163.7	63.2	7,400	19,000
7	<i>Jos</i> <sup>[g]</sup>	Plateau	821,618	336.7	130.0	451	1,170
8	<i>Ilorin</i> <sup>[h]</sup>	Kwara	777,667	149.3	57.6	1,016	2,630
9	<i>Abuja</i>	FCT	776,298	865.6	334.2	439	1,140
10	<i>Kaduna</i> <sup>[i]</sup>	Kaduna	760,084	488.9	188.8	5,802	15,030
11	<i>Enugu</i> <sup>[j]</sup>	Enugu	722,664	186.8	72.1	1,300	3,400
12	Zaria <sup>[k]</sup>	Kaduna	695,089	132.3	51.1	1,234.6	3,198
13	Ogbomosho <sup>[l]</sup>	Oyo	602,690	119.9	46.3		
14	<i>Warri</i> <sup>[m]</sup>	Delta	557,398	214.8	82.9		
15	Ikorodu	Lagos	535,619	37.1	14.3	1,553	4,020
16	<i>Maiduguri</i>	Borno	521,492	194.7	75.2	3,807	9,860
17	<i>Ife</i> <sup>[n]</sup>	Osun	509,035	56.1	21.7	291	750
18	<i>Bauchi</i>	Bauchi	493,810	187.2	72.3	134	350
19	<i>Akure</i>	Ondo	484,798	196.4	75.8	489	1,270
20	<i>Abeokuta</i>	Ogun	451,607	242.1	93.5	510	1,300
21	<i>Uyo</i> <sup>[o]</sup>	Akwa Ibom	436,606	209.7	81.0	1,206	3,120
22	Oyo <sup>[p]</sup>	Oyo	428,798	42	16	177	460
23	<i>Sokoto</i>	Sokoto	427,760	138	53		
24	<i>Owerri</i>	Imo	401,873	201.1	77.6	729	1,890
25	<i>Yola</i> <sup>[q]</sup>	Adamawa	392,854	119.8	46.3	473	1,230
26	<i>Calabar</i>	Cross River	371,022	118.8	45.9	910	2,400



## Abeokuta troubles, 1892

A Lagosian who was on his way to Abeokuta was turned back by the Parokiya at Igaun last Sunday. And a man who was discovered conveying a letter to Abeokuta was arrested and sent on a prisoner to that place.

Source: 'General News', *Lagos Weekly Record*, 20 February 1892, p.3.

From Abeokuta we learn that the messengers with a letter from the natives of this place have been sent back. A feeling of extreme unrest is said to prevail in the town, and the christian converts go about armed. The Ashipas of all the townships are collected at Igaun. At a meeting held on the 10th: it was decided to prohibit the inhabitants from attending the Igaun market.

Source: 'General News', *Lagos Weekly Record*, 12 March 1892, p.3.

It is rumoured that the Egbas have sent a letter to the Roman Catholic Fathers asking them to intercede with the Government, and to induce His Excellency the Governor to forward to them again the letter which they had refused to accept from Superintendent Pratt.

Source: 'General News', *Lagos Weekly Record*, 20 August 1892, p.3.

From Abeokuta we learn that the messenger despatched by Mr. G. W. Johnson with a letter to the authorities on the subject of the complications existing with this Government had arrived and that his mission had had a favourable reception. As the immediate outcome of Mr. Johnson's letter we understand that two Ibadan men kidnapped by Idowu Onode on the Jebu Remo route have been restored to their people by the authorities of Abeokuta. The two men were despatched to their homes (one to Oyo and the other to Ibadan) on the 18th instant. The Egba war-boys have been strictly warned by the elders against kidnapping on the Jebu routes.

Source: 'General News', *Lagos Weekly Record*, 27 August 1892, p.3.

It is stated that the Egbu authorities are proposing to establish postal facilities. Such an introduction will be of great advantage to the country.

Lagos Weekly Record,  
8th September 1894, p. 3

**ABEOKUTA (IBARA)**

Situated 50 miles north from Lagos. Under Lagos administration until 30 April 1906 and then Under Southern Nigerian administration until 31 December 1913. In 1939 a head office. Name changed to Ibara. by 1928, renamed Abeokuta on 1 January 1936. Upto 1908 used time codes A to F. Upgraded to a money order office 1 March 1918. When opened used manuscript until the datestamp arrived.

11.4.99 - S.O. 30.9.60

2 20



D2 (21.8.99)-(25.9.04)\*

Val x 20



D3 (8.12.04)-(29.5.08)  
(26.11.18)-(28.9.22)

Val x 5

Also used occasionally in 1911  
Time Codes A to F in use



D5 (13.7.08)-(7.10.20)

Val x 10

N.B. Forgeries known dated 31.8.08  
(Letters differently spaced)



D7 (19.7.17)-(23.8.22)  
& (16.2.35)-(27.7.35)  
Val x 5



D8 (28.5.21)-(4.8.23)

Val x 6



D9 (2.8.23)-(15.2.31)

Val x 5



D11 (7.5.28)-(4.12.35)  
Val x 20



D13 (17.1.36)-(23.1.38)



D14 (7.3.36)-(6.3.56)



D16 (18.2.49)-(9.5.56)



D17 (16.5.51)-S.U. 30.9.60



Sent 3.12.57  
D18

Registered (R)



R2 (12.5.22)-(1.7.29)



R3 (9.8.28)-(16.11.35)



R4 (3.1.34)  
N.B. Incomplete



R6 (21.2.36)-(15.5.50)



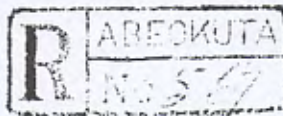
R7 (1.12.51)-(1.4.60)



Sent 12.2.58  
R8



R9 (9.2.60)-(23.2.60)  
Normally used on Telegrams



R10 (13.8.18)-(15.2.22)

ABEOKUTA  
R 739

R12 (27.1.48)

Instructional (I)

MISSENT TO

I3 (26.10.44)  
Val x 30

Unpaid (UP)

T

UP2 (20.10.15)-(24.9.32))

Parcel Post (PP)



PP2



PP3



PP4 (21.6.43)

Abeokuta - Arinlese Square  
Postal agency under Abeokuta

15.9.41 - S.O. 30.9.60

10 100



D1 (3.10.41)-(11.1.51)



D3 (21.11.51)- S.U. 30.9.60



BOSTON  
MASS  
AUG 16  
1899

# Abeokuta



1899-1900 "ABEOKUTA / A / DATE / YEAR / W. AFRICA"





1901 - "ABEOKUTA/B/DATE/YEAR/W.AFRICA"  
1904







**Abeokuta Station**

Under Lagos administration until 30 April 1906 and then under Southern Nigerian administration until 31 December 1913, used time codes A to F.

27.10.04\*\* -(15.3.07)

400 -

\*\* Date of notice opening



D2 (6.7.06)-(15.3.07)

*Abeokuta Station*










Mrs. N. C. Lumber,  
 No. 500, 14<sup>th</sup> Avenue,  
 Meridian,  
 Miss.

*W. H. R.*

*From Mrs. Lumber*




*Mrs. Lumber*

Togo Land



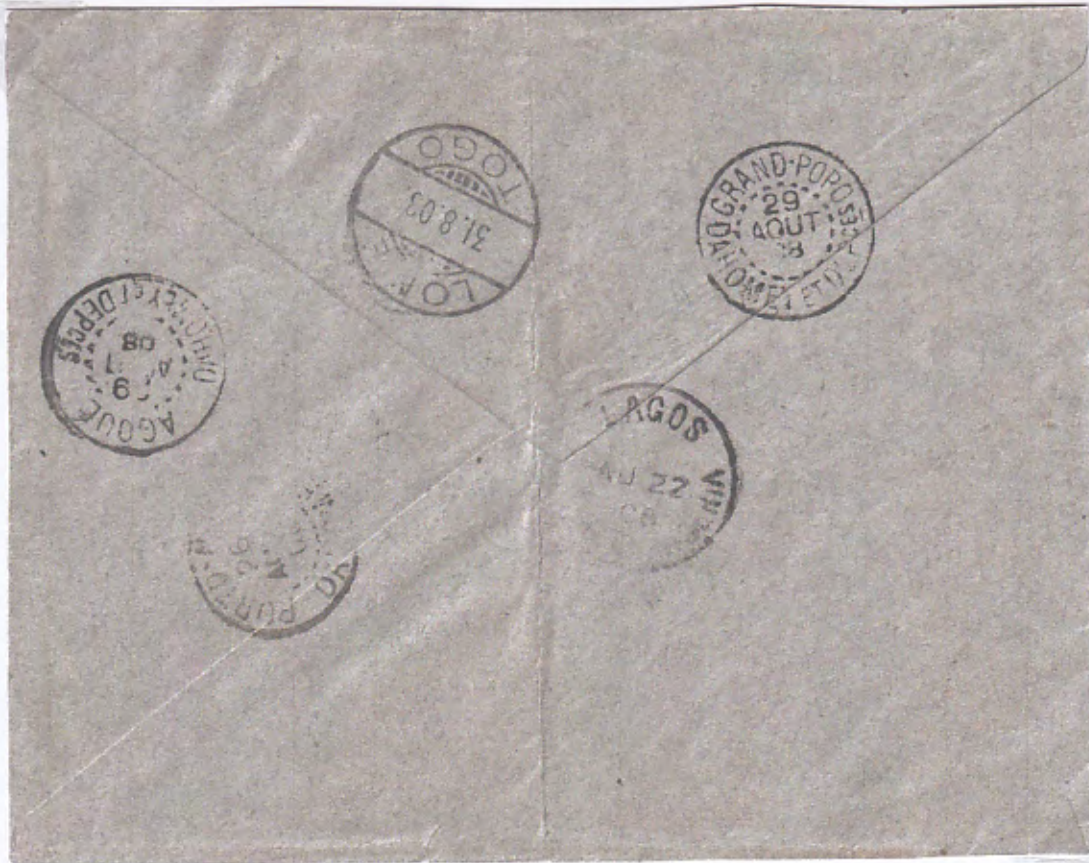
Rev. Father Superior

Catholic Mission

Lome

Togo Land

West Africa



## Stamp Sales, by Post Office, 1904

In 1904, a breakdown of sales of stamps between the various offices shows how dominant the Lagos GPO was compared to other post offices as regards mail. The fact that the much larger city of Ibadan had fewer sales than Abeokuta and not much more than the Licensed Stamp Dealers is also noteworthy:

- Lagos: £2,733
- Lagos Branch Office: £114
- **Abeokuta: £114**
- Ibadan: £84
- 'Licensed Stamp Dealers' [Lagos]: £77
- Ebute Metta: £68
- Badagry: £19
- Epe: £10
- Ikorodu: £3.<sup>1</sup>

## Lagos Government Railway and the Post Offices Opening

25 miles of a new 3 feet 6 inches gauge Lagos Government Railway were completed in 1897.

In 1899, 60 miles were opened, reaching Abeokuta for the first time.

Another 64 miles from Aro to Ibadan were then under construction. All this was opened on 4th March 1901. A two mile branch line was then opened between Aro and Abeokuta.

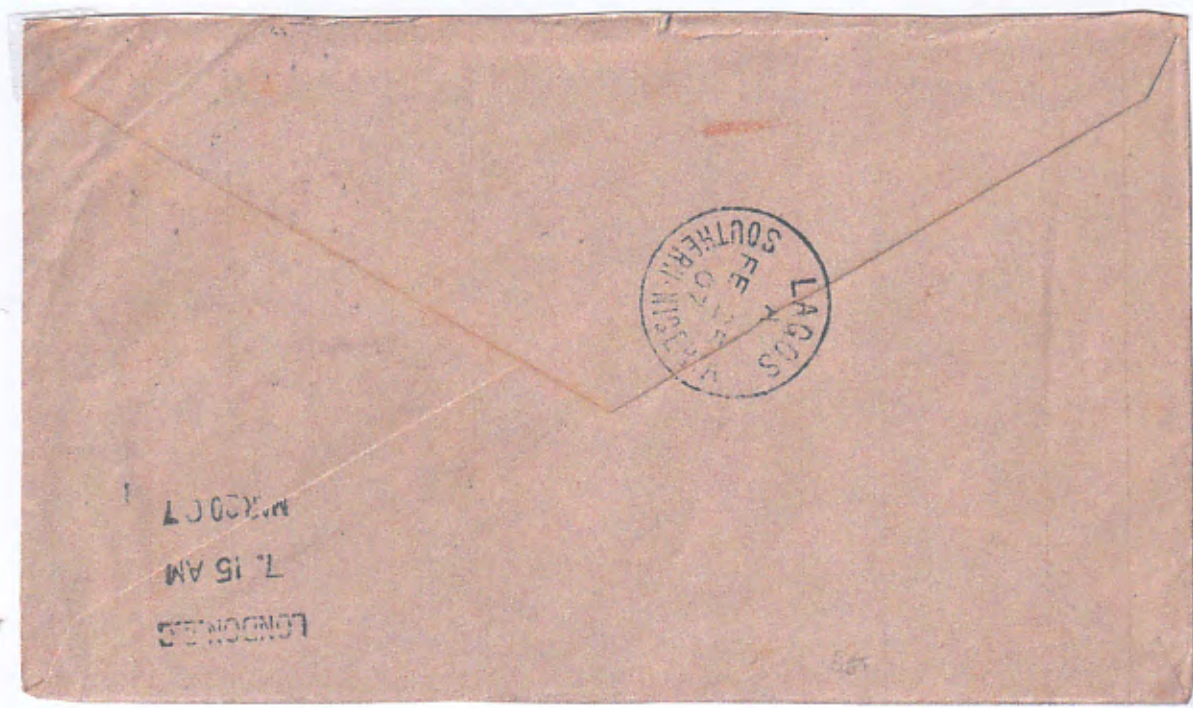
Post Office openings:

Abeokuta	1899
Aro (railway)	27th October 1904
Abeokuta Station	27th October 1904

---

<sup>1</sup> Jack Ince and John Sacher, *The Postal Services of the British Nigeria Region*. London: RPSL, p. 524.





**SOUTHERN NIGERIA:** (Wreck Mail) 1907 (FE 22) envelope to London franked marginal 1d. tied Abeokuta cds, via Lagos and carried on the *SS Jebba* which was shipwrecked in dense fog off the South Devon coast on March 18<sup>th</sup>, mail arriving in London on 20<sup>th</sup>. Envelope bearing fine strike of 61mm cachet **SALVED MAIL** and 47mm long **S S JEBBA**; fine condition.

## Pillar Box at Igbein Hill, Abeokuta, 1908

It is hereby notified that for the convenience of the Public, Post Office Pillar Boxes have been erected on the main road at the entrance to Igbein Hill, Abeokuta and as Apanpa Road, near Ojaoba Market and at Oje Market, Ibadan.

These Boxes are cleared at the hours stated hereunder:-

Igbein Hill, Cleared daily, Sundays excepted, at 11am.

Apanpa Road (near Ojaoba Market) Cleared daily,  
& Oje Market Sundays  
excepted, at 5pm

P. L. H. Archer,  
*Postmaster-General,*  
Lagos GPO,  
Lagos, Southern Nigeria  
21st September 1908.<sup>1</sup>

---

<sup>1</sup> 'No.1082: Post Office Notice', *Southern Nigeria Government Gazette*, 7th October 1908, p. 1,424.





Dear Little Plum POST CARD

Just a line hoping to find you in good health as it leave me at Present I have told Father that you have been a good girl and he say he will put something in your stocking but he dont tell me what it is so you will have to wait and see, So good night and God bless you, wishing you a merry Christmas and a Happy New Year from your loving Plum Bob



Miss Clara Warwick  
4 Smith's Place  
Whiston N19=  
Lancashire  
England

XXXXXXXXXXXX

MISSIONS AFRICAINES, 150, Cours Gambetta, LYON



18. BÉNIN — Léproserie d'Abéokuta

MISSIONS AFRICAINES, 150, Cours Gambetta, LYON



1. BÉNIN — Hôpital du Sacré-Cœur à Abéokuta

14. LAGOS — Catholic Mission Abeokuta







*Ake Church*

*Abeokuta*

Photobalm - Lagos



*Interior of Ake Church*

he did.

*Abeokuta*


Photobalm - Lagos

**Pictorial POST CARD** Lagos  
W. C. A.

For Inland Postage this Space, as well as the Back, may now be used for Communication.

For Foreign Postage the Back only (Post Office Regulation).

The Address only to be written here.



Printed at the works in Germany.

---

Miss Wells,

c/o Messrs Bonniwell & Bates,

Morpeth.

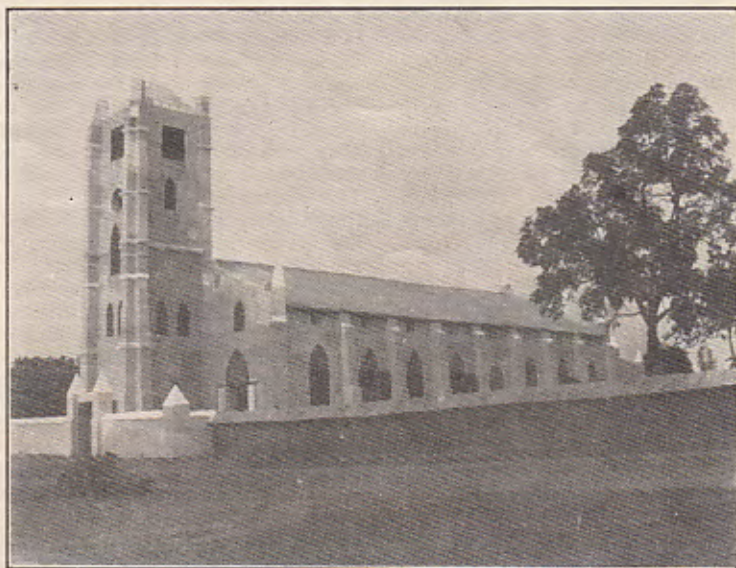
Northumberland.

R

5/15

# Letter from Mr. Ernest Fry.

(No. 4.)



TOWNSEND-WOOD MEMORIAL CHURCH (See page 3).

CHURCH MISSIONARY SOCIETY,  
ABEOKUTA, WEST AFRICA,  
*April, 1900.*

My dear friends,

At time of writing you at home are enjoying the beautiful Springtide with all its resurrection messages, we too are experiencing a similar change, but unlike you, ours is the revival after five months of dry hot weather. All vegetation was dried up and parched but it is now delightfully green with the first refreshing rains. In these two states does not nature speak to us of the spiritual needs of all men. Some needing the new regenerating power of God the Holy Ghost and others having already "passed from death unto life," but ever needing the refreshing and renovating showers of the same Holy Spirit.

We implore your prayers for all in this country who are in one of these two positions.

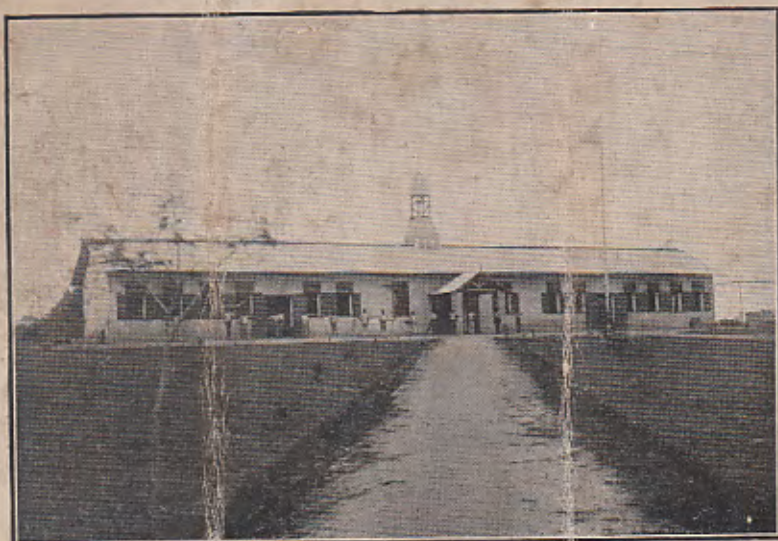
For those who are yet in the winter of dark cold

superstition and idolatry, or the cruel and lifeless faith of Mohammedanism; and for all the true believers and workers who, in the midst of a "dry and thirsty land," ever long for the refreshing showers of God's grace.

Often in the dry season you will see the people here sitting at the bottom of a well waiting for the water to trickle in before they can scoop up enough to quench their thirst with, and such water as we should not give an animal to drink at home.

This is a sad resemblance of their soul-thirst and the miry and scanty waters they have to satisfy it with.

Then too when it rains you will see every available vessel put out to catch the precious drops of pure water from the heavens above—a type of a heart fully yielded to the Holy Spirit waiting to be filled to overflowing with His own presence and blessing. Pray that such may be ours. Talking of water, calls to my mind a case I had quite recently



Abeokuta  
Industrial & Agricultural  
Institute,

*(Blaise Memorial.)*

PRINCIPAL:  
HORACE J. BARWICK,  
M.J.I.E.

—  
SOUTHERN NIGERIA,  
W. AFRICA.

1910.

energetically and there arose the fine building where now 20 apprentices live and are receiving a thorough training in carpentry and joinery.

The Trust Deed requires that the money left by Mr. Blaize be applied "for the promotion and encouragement of industrial and agricultural pursuit to the benefit and advantage of West African youth." It has not been possible up to the present to seriously engage in agricultural work. Contracts for buildings and work of various kinds have poured in to the Institute so that the whole time of the Superintendent and his helpers has been taken up

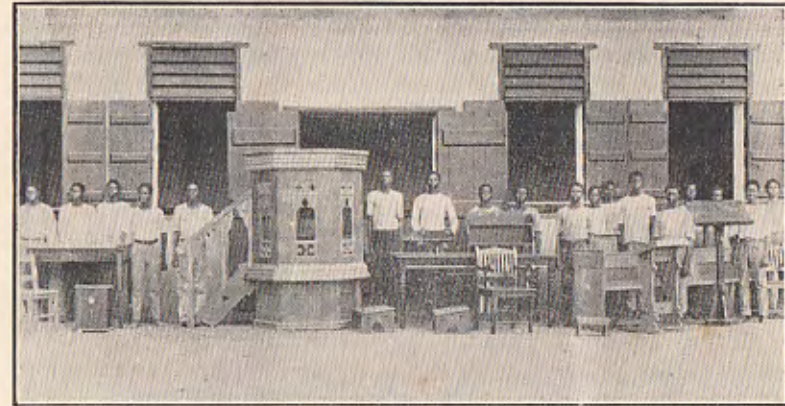


APPRENTICES AT THEIR WORK.

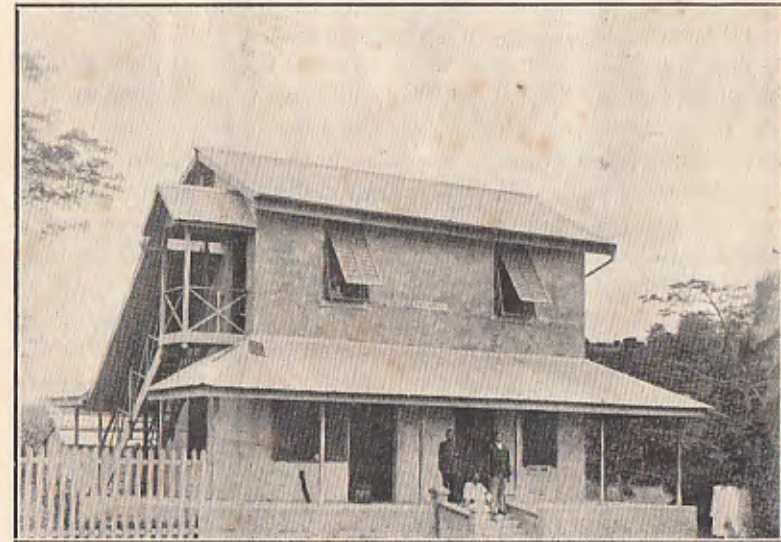
with this department. If the agricultural side is to be developed a specially trained man will be necessary to take charge of it, one who can devote his whole time to this work. Among the buildings in addition to the Institute erected may be mentioned a Leper Church, a large Mission House, a Trader's Shop and House, Government Buildings which included a Court House, Prison, Post and Telegraph Office, as well as the Superintendent's House which adjoins the Main Institute Building.

The Trust Deed also requires that the Institution be carried on under

the auspices of the Church of England: that is, that the Doctrines to be preached or taught in connection therewith and the worship



APPRENTICES AND THEIR WORK.



ONE OF THE BUILDINGS ERECTED BY THE INSTITUTE.

to be observed, be such as are consistent with the Protestant form of religion, subject at all times to the control, order and discretion

48  
 65  
 74  
 42  
 16  


---

 256 overs

695  
 44  


---

 651

66  
 31  
 37  
 22  
 15  


---

 171 overs

256

651 (2 1/2 - 11 sum)  
 372  


---

 139

405  
 342  


---

 63

189

2 1/2 - 18 sum



Mr. & Francis  
 The Cottage  
 Engineers Hall  
 England  
 Dudley









Alake of Abeokuta

*"DIAPRA"  
Lloyd report  
Chm. G. M.  
W. C. A.*



POST CARD

Pictorial.

Lagos.

W. C. A.



For Inland Postage this Space, as well as the Back, may now be used for Communication.

For Foreign Postage the Back only. (Post Office Regulation).

The Address only to be written here.

*A. W. Stanley Esq.  
Accountants Department  
Gt Central Railway  
Manchester  
England*



Group taken after Opening of the Court at Abeokuta  
Lagos-West-Afrika



The Alake Guiding a Plough at the Agricultural Show

[Robinson

THE man who has been the chief attraction of London in June has been the Alake, whose magnificent colour and costume will not easily be forgotten by those who have seen him. Cold water has, however, come to damp some enthusiasts. "Is the Alake of Abeokuta,"

says, for instance, the *Westminster Gazette*, "the important personage the ceremonies attaching to his coming and going lead one to believe, or is he simply one of those petty chiefs who are as common as tramps on the African coasts?"



The Alake at the Guildford Agricultural Show  
THE ALAKE IN ENGLAND

[Calcott



**The Alake of Abeokuta shaking hands with Commander Eva Booth,  
head of the Salvation Army, at a garden party for Dominion and  
Coronation visitors to London.**

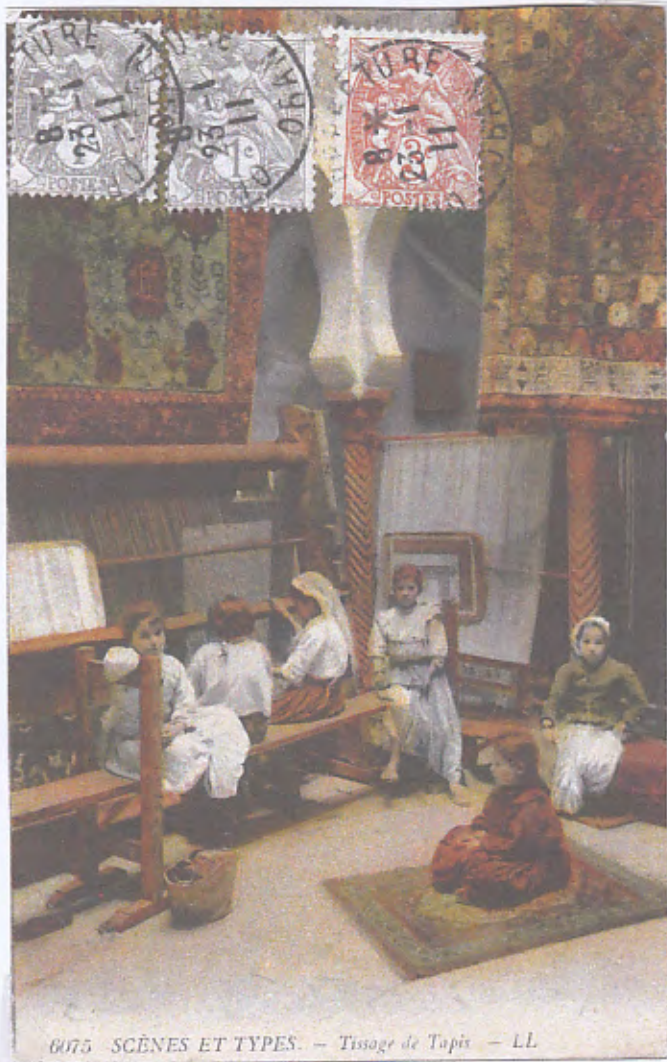
The Cosmopolitan Correspondence Club (CCC) was a Milwaukee USA-based club for the exchange of postcards which flourished in the early 1900s. It had around 5,000 members worldwide and a magazine, the Globetrotter, which 'brings the World to your Library Table'.

A number of the postcards include girl's names alongside a rubber stamp giving the CCC member's name and membership number (eg Agatha, Diana, Ella, Elsa, Emma, Hanna, Olga). They are codes for collecting and other interests for members of the CCC were listed in their journal, *The Globe Trotter*, which can be seen at <https://babel.hathitrust.org/cgi/pt?id=wu.89060943743;view=1up;seq=14>

One of its members was Harry C. Edwards, who worked for Patterson Zochonis in Abeokuta, Southern Nigeria in 1911. This is a collection of postcards he was sent from all over the world by other CCC members.

In turn, Edwards, CCC member 7274, must have sent postcards here, there and everywhere, with Southern Nigeria stamps attached.





6075 SCÈNES ET TYPES. - Tissage de Tapis - LL

**Paul BERVIER**

**CARTE POSTALE**

Tous les Pays étrangers n'acceptent pas la Correspondance Directe.  
(Se renseigner à la Poste).

CORRESPONDANCE

Désire Timbres  
Offre Cartes

LAGOS N. 2853 C.C.C.N. 5412

ADRESSE

45, Rue de l'Arsenal  
**ORAN**

---

Monnien H. C. Edwards  
 % 13. 2 Co Ltd  
 Abeokuta  
 Nigérie du Sud  
 (Afrique Occidentale)



SCENES ET TYPES. — Femme Juive dans son Intérieur. — LI.

**Paul BERVIER**

**CARTE POSTALE**

---

CORRESPONDANCE

OBEOKUTA

W.C.M. 1911

45, Rue de l' Arsenal  
ADRESSE  
à ORAN

Manniem

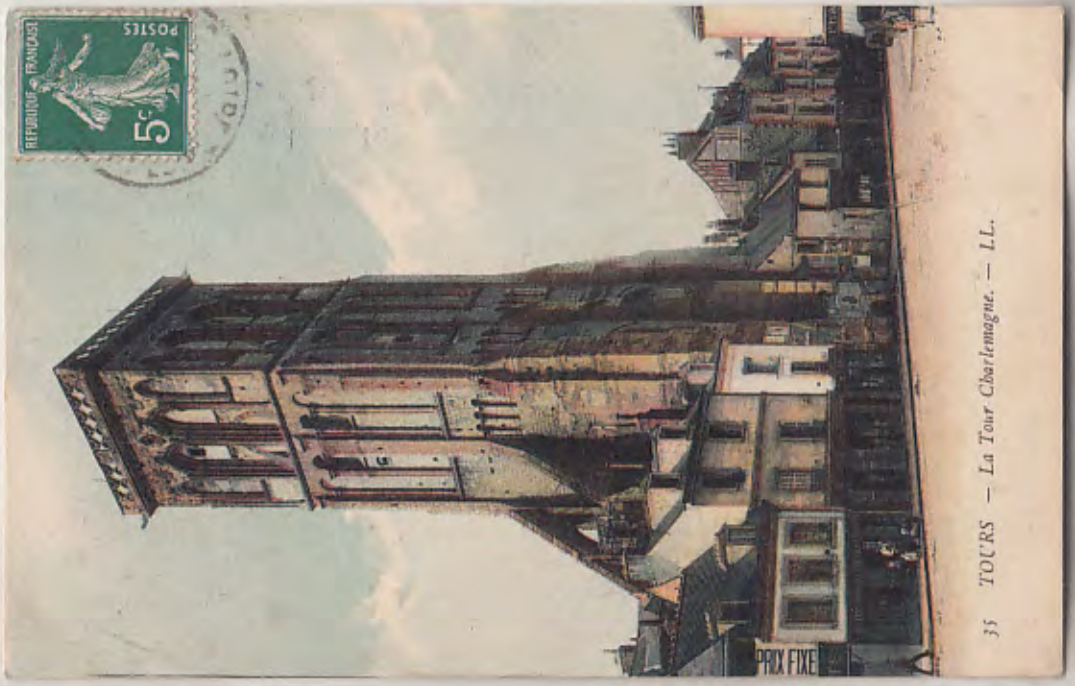
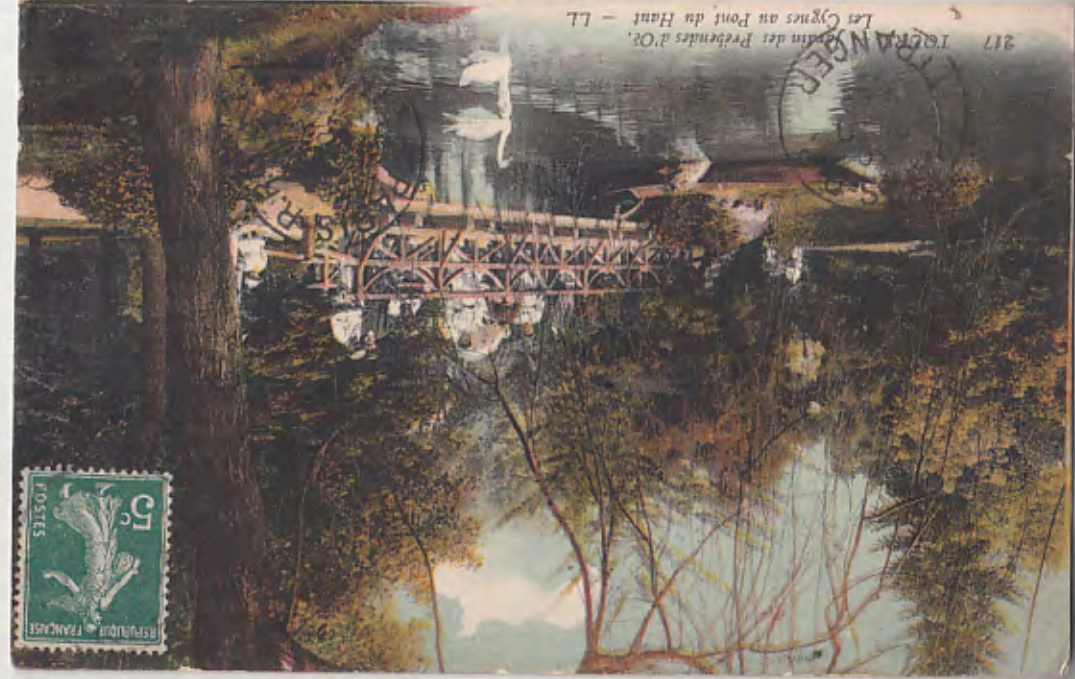
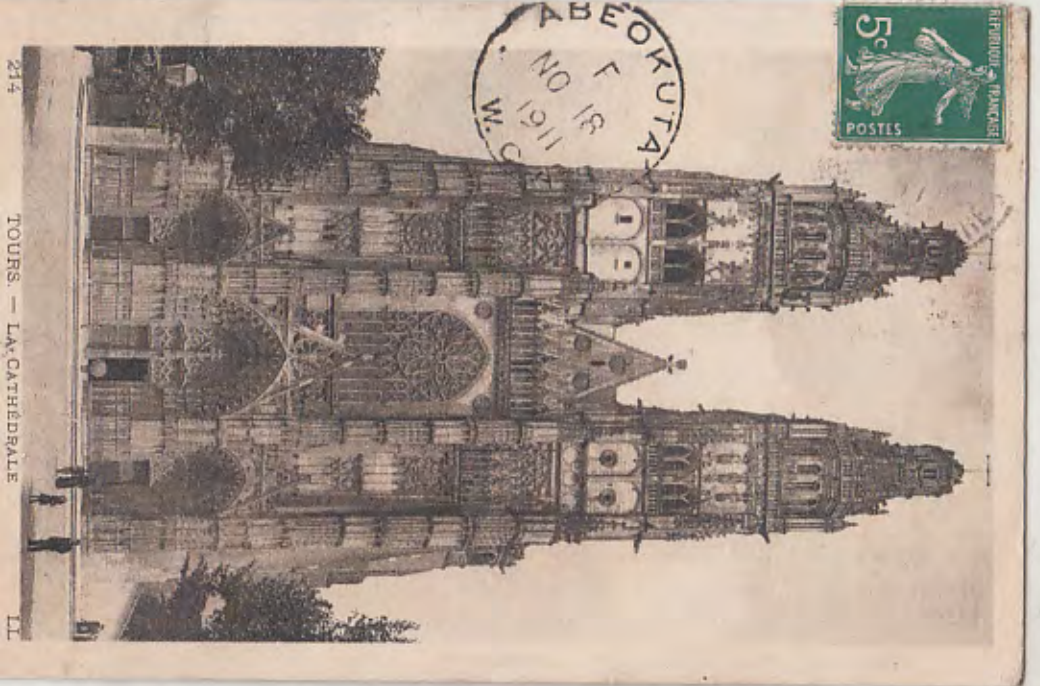
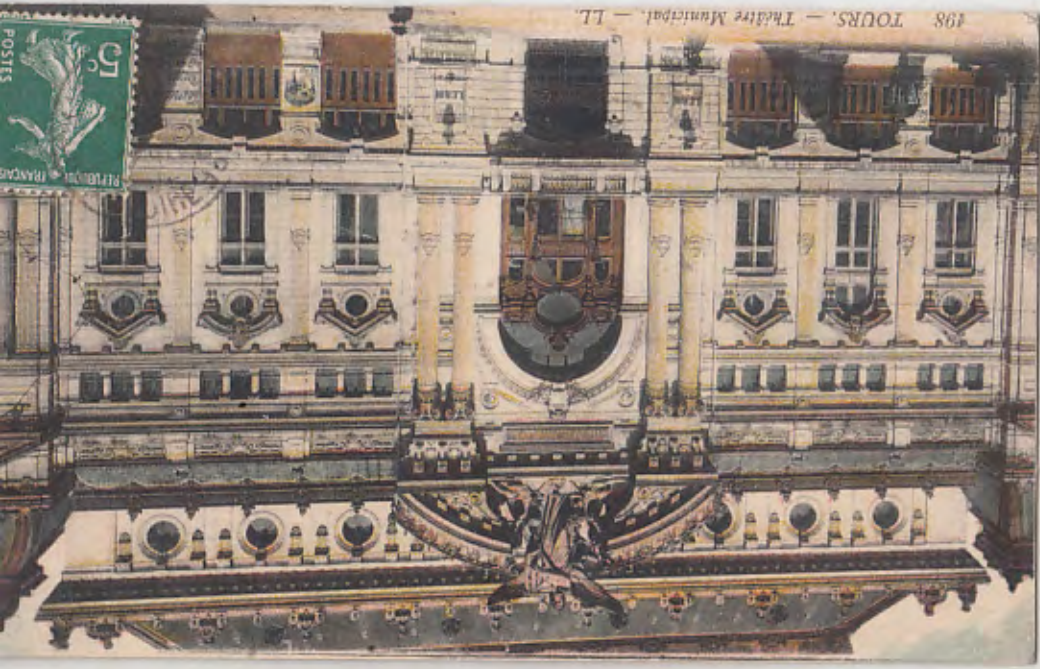
H.C. Edwards  
% P.Z. & Co. Ltd

Obeokuta

Nigerie du Sud  
(Afrique occidentale)

OSN OS. N. 2853 C.C.C. N. 5412

Arabia Bertha  
 Aethiopia Britannia  
 Olga 1.5  
 Bervier



29 OCT 1911

IMPRIMÉ

CARTE POSTALE

T.C.V.

CORRESPONDANCE

29 OCT 1911

Edmond COËLLIER  
MONTLOUIS  
(Indre-et-Loire) FRANCE

C.C.C. 2302

ADRESSE

Mr. H. C. Edwards  
2/12  
G. P. L. et Co Ltd  
Abeokuta  
Southern Nigeria  
Nigeria du Sud  
Afrique

IMPRIMÉ CARTE POSTALE



T.C.V.

Tous les Pays étrangers n'acceptent pas la Correspondance de ce genre.  
(Se renseigner à la Poste).

CORRESPONDANCE

29 OCT 1911

Edmond COËLLIER  
MONTLOUIS  
(Indre-et-Loire) FRANCE

C.C.C. 2302

ADRESSE

6/12  
Mr. H. C. Edwards  
G. P. L. et Co Ltd  
Abeokuta  
Nigeria du Sud  
Afrique



IMPRIMÉ CARTE POSTALE

T.C.V.

CORRESPONDANCE

29 OCT 1911

Edmond COËLLIER  
MONTLOUIS  
(Indre-et-Loire) FRANCE

C.C.C. 2302

ADRESSE

Mr. H. C. Edwards  
9/12  
G. P. L. et Co Ltd  
Abeokuta  
Nigeria du Sud  
Afrique

IMPRIMÉ

CARTE POSTALE



T.C.V.

29 OCT 1911

Edmond COËLLIER  
MONTLOUIS  
(Indre-et-Loire) FRANCE

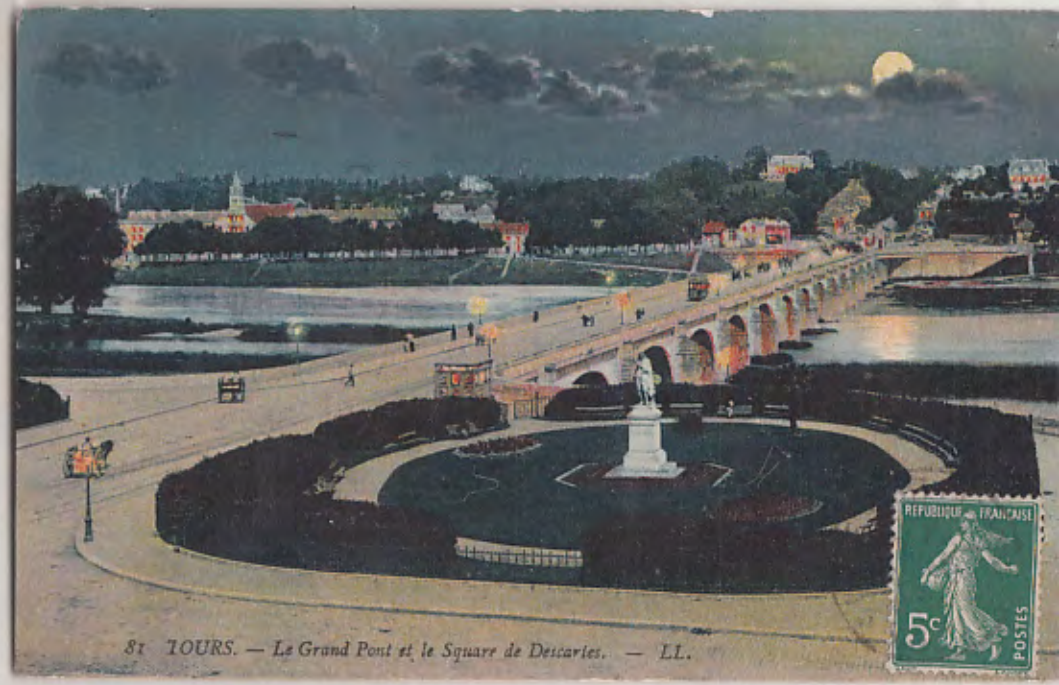
C.C.C. 2302

ADRESSE

9/12  
Mr. H. C. Edwards  
G. P. L. et Co Ltd  
Abeokuta  
Nigeria du Sud  
Afrique



294 TROUVILLE. — Torpilleurs à quai. — LL.



87 TOURS. — Le Grand Pont et le Square de Descartes. — LL.



296 TROUVILLE-DEAUVILLE. — Vue générale. — LL.



1 VILLERS-SUR-MER. — Panorama vers Trouville — LL.

174  
~~IMPRIMÉ~~ CARTE POSTALE

Tous les Pays étrangers n'acceptent pas la Correspondance directe.  
(Se renseigner à la Pos')



T.C.V.

CORRESPONDANCE

29 OCT 1911 <sup>10</sup>/<sub>12</sub>

Edmond COËLLIER  
MONTLOUIS  
(Indre-et-Loire) FRANCE  
C.C.C. 2302

8r TOURS. — Le Grand Pont  
et le Square de Descartes. — LL.

ADRESSE

M<sup>r</sup>. H. C. Edwards  
% P. Z. et Co<sup>l</sup>  
Abeokuta  
Nigeria du sud  
Afrique

<sup>Impression</sup>  
~~CARTE POSTALE~~

2/4  
CORRESPONDANCE

*G. S. Edwards*  
C.C.C. 6779  
Monsieur.  
Kabatika  
Olym 1-3-

ADRESSE

Monsieur  
H. C. Edwards  
% P. Z. et Co. Ltd.  
Abeokuta  
South Nigeria

<sup>Impression</sup>  
~~CARTE POSTALE~~

2/4  
CORRESPONDANCE

*G. S. Edwards*  
C.C.C. 6779.

ADRESSE

Monsieur  
H. C. Edwards  
% P. Z. et Co. Ltd.  
Abeokuta  
South Nigeria

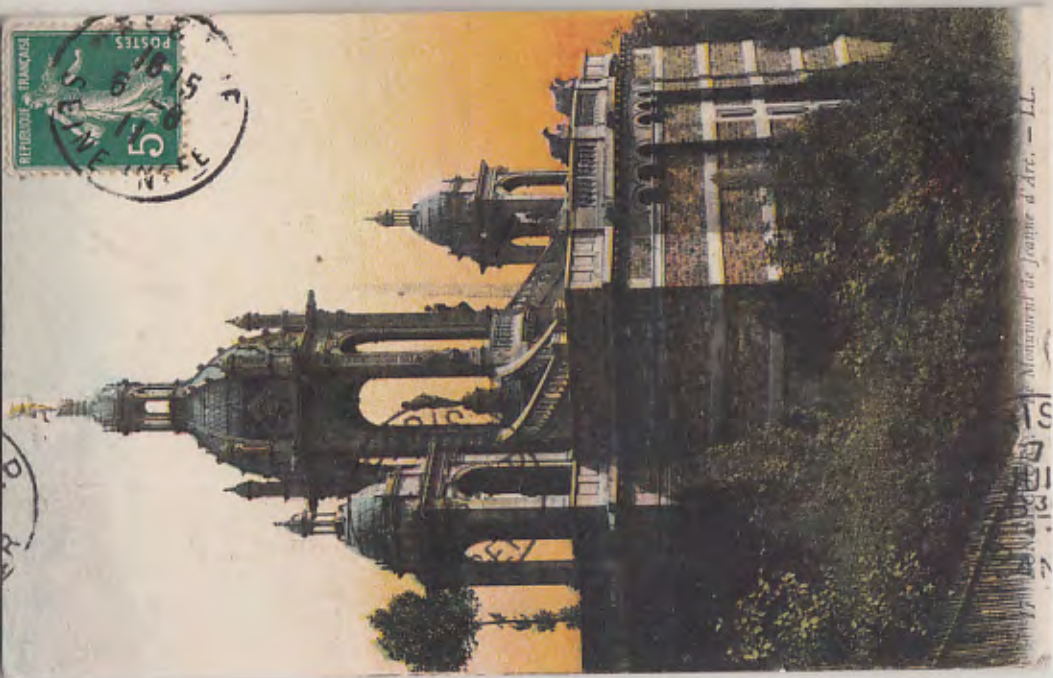
<sup>Impression</sup>  
~~CARTE POSTALE~~

3/4  
CORRESPONDANCE

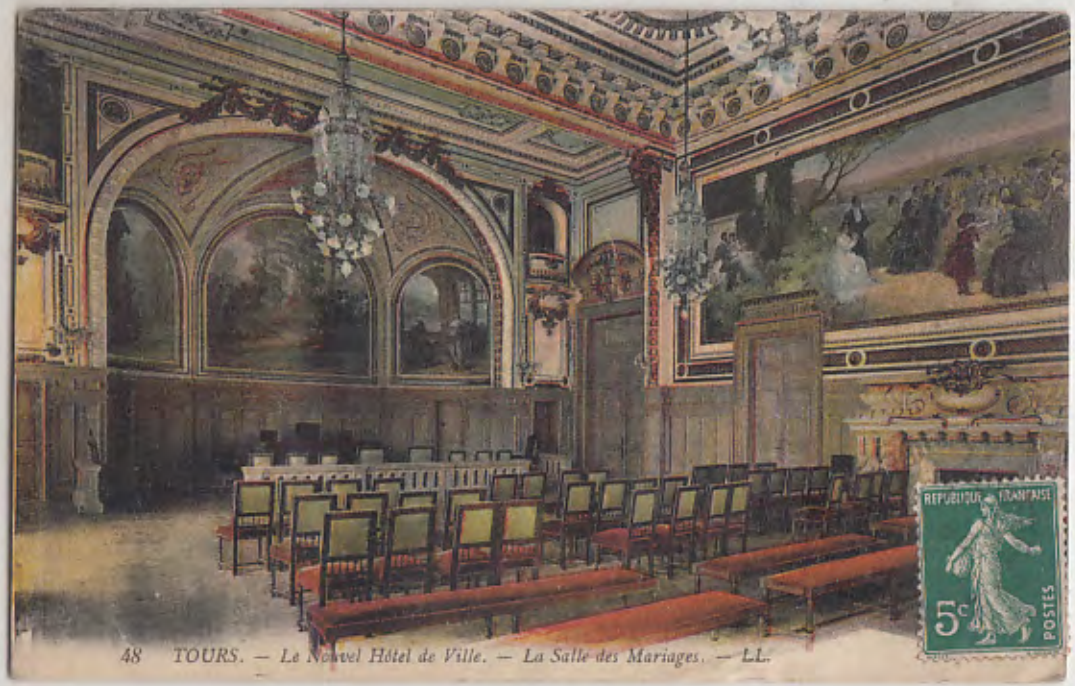
*G. S. Edwards*  
C.C.C. 6779

ADRESSE

Monsieur  
H. C. Edwards  
% P. Z. et Co. Ltd.  
Abeokuta  
South Nigeria



Montanvert de Joazeur d'Arc. — LL.



48 TOURS. — Le Nouvel Hôtel de Ville. — La Salle des Mariages. — LL.



Elsässer Bauern. — Paysans alsaciens.



123. ROUEN — La Grosse Horloge  
Style Gothique 1390-1397, l'Arcade date de 1511 et la Fontaine de 1731

Fischer's Kunstverlag, Strassburg

J. M. & Co. - Nr. 29 Central Post

*Postkarte*  
Monsieur G. E. Edwards  
P.O. Box 100  
Southern Nigeria

POSTKARTE - Carte postale

*Stamps on rear side*

3/6

Monsieur G. E. Edwards  
P.O. Box 100  
Abeokuta  
Southern Nigeria  
Africa



*Stamps*

Tous les pays étrangers n'acceptent pas la correspondance au recto, se renseigner à la poste

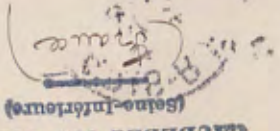
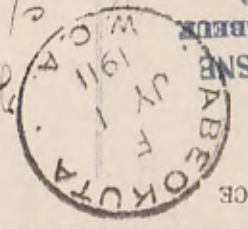
Correspondance

Adresse

CARTE POSTALE

*Impressum*

Monsieur G. E. Edwards  
P.O. Box 100  
Abeokuta  
Africa



ADRESSE

CORRESPONDANCE

CARTE POSTALE

*Stamps*

M. H. C. Edwards  
P.O. Box 100  
Abeokuta  
Nigeria du Sud  
Africa



1/2

CORRESPONDANCE

EDMOND COELLIER, B.E.V. 292

MONTLOUIS,

INDRE ET LOIRE, FRANCE.

Kosmopolit. 6501

J.T.C. 4918

U.S.C.E. 1649

S.C.E. HISPANIA 895

I.P.C. 398 I.P.P.C. 398

A.P.N. 3057

G.C.C. 2302

*Stamps*

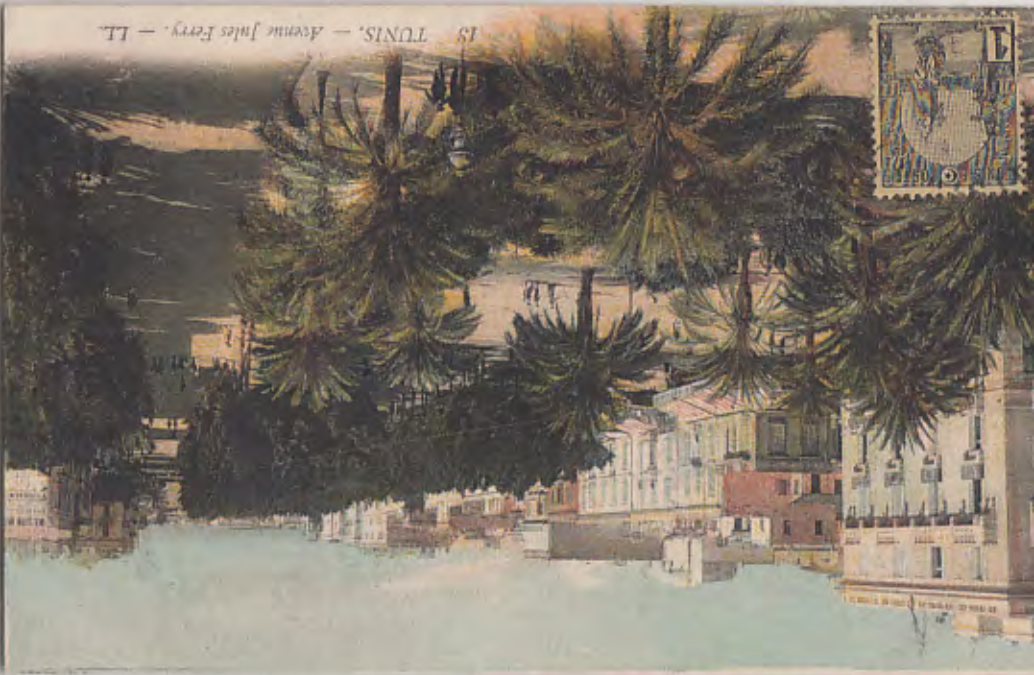
CARTE POSTALE

*FCV*

29 OCT 1911



Les Saboteurs dans la Forêt



15 TUNIS. — Avenue Jules Ferry. — LL.



C. P. . 6. La Cathédrale de ROUEN  
L'Abside et la Pileche  
(Hauteur 52 mètres)



Costume siciliano

14  
1830  
12  
11  
SEINE  
ROUEN

IMPRIMÉ  
CARTE POSTALE



ADRESSE

*cc 4274*  
*H. C. Edwards*  
*P. Z. & Co., Ltd.*  
*Abeokuta*  
*Southern Nigeria*  
*Afrique de l'Ouest*

CARTE POSTALE



Correspondance

Adresse

*Correspondance*  
*Avesnes 21 Mars 1911*

*M. H. C. Edwards*  
*c/o P. Z. & Co. Ltd.*  
*Abeokuta*  
*Southern Nigeria*  
*(West Africa)*

Carte Postale - Postkarte - Post Card

SINOPOLI PASQUALE  
POSTE RESTANTE  
MESSINA  
C. C. C. 6510  
ELLA - ELSA - ERNA



*Mons*  
*H. C. Edwards*  
*P. Z. & Co. Ltd.*  
*Abeokuta (Sud-Nigeria)*  
*(West Africa)*

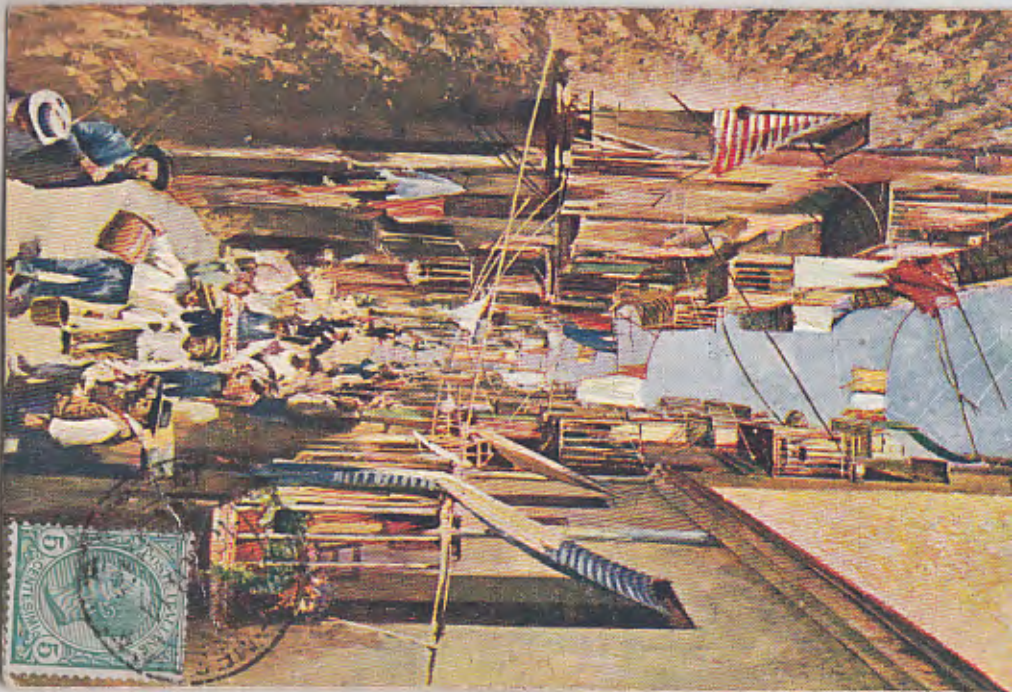
IMPRIMÉ  
CARTE POSTALE

CORRESPONDANCE

ADRESSE

**MAURICE HALIMI**  
**BEJA (Tunisie)**  
**→ C C C 7598 ←**

*Monsieur*  
*H. C. Edwards*  
*c/o P. Z. & Co. Ltd.*  
*Abeokuta*  
*Southern Nigeria (W. Africa)*



Costumi Siciliani - Giarani.



Palazzo Bonicelli  
Sec. XIII. ora del Seminario, Reg. di Palermo.



VAT 3438

CARTOLINA POSTALE ITALIANA (CARTE POSTALE ITALIE)

19/3/11  
 della  
 Giuseppe  
 Lanoss  
 C. G. G. 4468  
 Correggio  
 (Reggio Emilia)  
 (Stabia)

Mr. H. C. Edwards  
 c/o P. Z. & Co. Ltd.  
 Abeokuta  
 (Southern Nigeria)  
 Abique

1911  
 MR 18  
 W. C. F.  
 ABEOKUTA

1911  
 MR 18  
 W. C. F.  
 ABEOKUTA

Ediz. Pionetico Ferrar. Reggio Emilia - H. & S. D. Fotogr. Seranti

4/10

Domini  
 C. G. G. 4468

Mr. H. C. Edwards  
 c/o P. Z. & Co. Ltd.  
 Abeokuta  
 (Southern Nigeria)  
 West Africa

1911  
 MR 18  
 W. C. F.  
 ABEOKUTA

1911  
 MR 18  
 W. C. F.  
 ABEOKUTA

EDIZIONE A. REBER - TRIPERIA - PALERMO  
 Proprietà artistica riservata.

4/10

Domini  
 C. G. G. 4468

Mr. H. C. Edwards  
 c/o P. Z. & Co. Ltd.  
 Abeokuta  
 (Southern Nigeria)  
 West Africa

1911  
 MR 18  
 W. C. F.  
 ABEOKUTA

1911  
 MR 18  
 W. C. F.  
 ABEOKUTA

EDIZIONE A. REBER - TRIPERIA - PALERMO  
 Proprietà artistica riservata.

4/10

Domini  
 C. G. G. 4468

Mr. H. C. Edwards  
 c/o P. Z. & Co. Ltd.  
 Abeokuta  
 (Southern Nigeria)  
 West Africa

1911  
 MR 18  
 W. C. F.  
 ABEOKUTA

1911  
 MR 18  
 W. C. F.  
 ABEOKUTA



CARTOLINA  
CARTE POSTALE

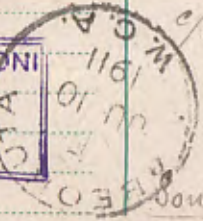


Anastasia  
Ema H. 5. 11  
Ella -  
Olga 4  
Katharina  
c.c. 3774



M.  
H. C. Edwards  
c/o P. Z & Co. Ltd.

DOMENICO BERTONI  
VIA MORIGI N. 15  
MILANO



Abeokuta  
Southern Nigeria  
(West Africa) 74558

2/3

Printed Matter

C. C. C. 3920  
GIOVANNI TOFFALONI  
VIA BRAMANTE 20  
(Italy) MILAN



*Handwritten signature*

M.

H. C. Edwards  
c/o P. Z. & Co. Ltd.



Abeokuta  
(Southern Nigeria) (Ind Nigeria)  
(Africa)

2/3

CARTOLINA POSTALE - CARTE POSTALE  
POSTKARTE - POST-KART



Laura Olga



M.  
H. C. Edwards  
c/o P. Z. & Co., Ltd.

C. C. C. 3920  
GIOVANNI TOFFALONI  
VIA BRAMANTE 20  
(Italy) MILAN

Abeokuta  
Southern Nigeria (Ind Nigeria)  
Africa

LINZ-URFAHR.



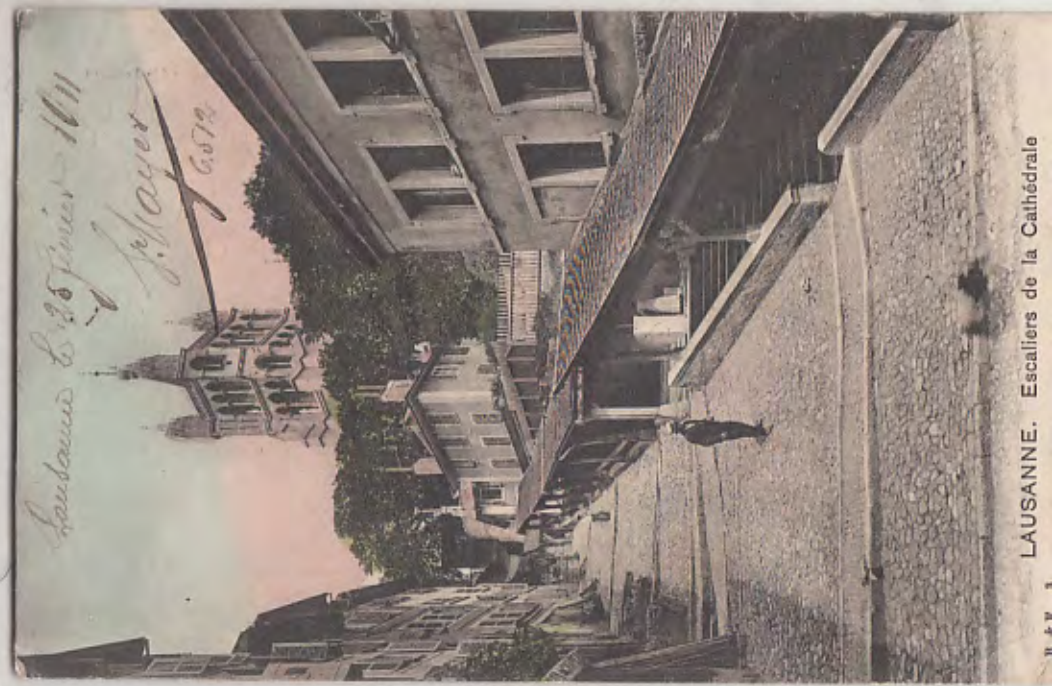
1748 Jälskapelle bei Urirotstock 2932 m.



Weggis und der Pilatus.



*Lausanne le 26 Juin 1871  
J. Mayer  
6079*



LAUSANNE. Escaliers de la Cathédrale

CARTE POSTALE.

Union postale universelle — Weltpostverein — Unione postale

CORRESPONDANCE

ADRESSE



H. C. Edwards  
Co. P. Z. & Co. Ltd.  
Abeokuta (South Nigeria)  
(West Africa)

Ed. Phot. Franco-Suisse, Berne.

Handwritten notes in French: "Paris del 4marches 3", "Abeokuta", "Nigeria", "West Africa", "C.C.C. 6578".

Postcard with three postage stamps (1 Heller, 2 Heller, 6 Heller) and multiple circular postmarks from Abeokuta, Nigeria, dated SP 23 11 1911. Handwritten address: "H. C. Edwards, Co. P. Z. & Co. Ltd., Abeokuta, Southern Nigeria, West Africa".

1/5 -  
L'IMBRE AU DOS  
CARTE RÜCKSEITIG

Wanderer-Postkarte  
Post Card



31/5/11  
Hans Merian  
Schapmattweg  
Binningen  
b. Base

H. C. Edwards  
Co. P. Z. & Co. Ltd.  
Abeokuta  
Southern Nigeria  
West Africa

C.C.C. 6578

Wanderer-Serie No. 1-5. Vierwaldstätter See. Weggis et le Pilatus.

Postcard with a green 5 Heller postage stamp and circular postmarks from Abeokuta, Nigeria, dated SP 2 11 1911. Handwritten address: "H. C. Edwards, Co. P. Z. & Co. Ltd., Abeokuta, Southern Nigeria, West Africa".

Drucksache

A. Vollmerweider  
C.C.C. 7193  
7. Aug. 1911

Verlag: Wehrli A. G., Kilchberg-Zürich.

*Liebst Du mich nicht, bin ich entflammt,  
Und wenn ich lieb nimm dich so, Achbit!*

—Carmen.—



„Die schöne Ryselte“  
Die zwei im Heu die  
fanden nichts dabau.



3/3

ERNST DWORZAK  
I. WOLLZEILE 15  
VIENNA, AUSTRIA.

Member of the Cosmopolitan  
Correspondence Club, Milwaukee, Wis.,  
U. S. A. (C. C. C. 6427.)

Katinka, Olga, 1, 5.



Dunksahe.



Mr. H. C. Edwards,  
c/o P. L. & Co. Ltd.,

Abeokuta.

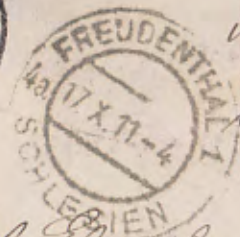
Southern Nigeria, West Africa.

Koschitzky, Omsk, Photograph, Gesellschaft Wien III.

Dear Sir!  
Please, send you cards  
without envelope. -

H. W. Beck  
C.C.C. 7358.

Herrn  
H. C. Edwards  
c/o P. L. & Co Ltd  
Abeokuta  
West-Afrika



Marke  
G. W. 11/13

H. C. Edwards  
c/o P. L. & Co. Ltd.

Abeokuta, Southern Nigeria  
West-Afrika



Please I am not  
your address, I have

Freudenthal  
P.L. & Co  
Abeokuta  
Southern Nigeria

21

C.C.C. 7358.

Herrn  
H. C. Edwards  
Abeokuta  
Southern Nigeria  
West-Afrika  
Katinka - Olga - Clara  
Alger 1-5.

## 1909-14

PWD spent £150 on Abeokuta Post Office and Savings Bank, which is now finished.<sup>2</sup>

Igbein Hill (Abeokuta) – The Post Office at Igbein Hill, which has hitherto occupied a portion of the District Commissioner's Office, was towards the close of the year [1909] removed to a newly erected building on the main road at the foot of the Residency hill. The situation of the new office is most convenient for the public and increased business has been the result. The building was erected by local contract under the supervision of the District Commissioner, to whose energy the success of the Postal Department in this District is largely due, and in it is provided not only adequate accommodation for office purposes but also comfortable quarters for the Postmaster above.<sup>3</sup>

New pillar box was erected at Abeokuta, near the Railway Station.<sup>4</sup>

A new Post Office having been erected at the entrance to Igbein Hill the pillar box at that place was removed to the town for the convenience of residents therein.<sup>5</sup>

Staff at Igbein Hill, Abeokuta in 1911:

- Emanuel Latunde Leigh, Second Class Clerk, appointed 1st January 1910, first appointed to colonial service 8th October 1901, £60 annual salary.
- James Ojo Peters, Mail Guard, appointed 1st October 1906, first appointed to colonial service 1st October 1906, £33 annual salary.<sup>6</sup> £36 annual salary in 1911.<sup>7</sup>

Igbein Hill PO ceased to be a Savings Bank Office on 14th October 1914. Abeokuta was opened as a Savings Bank Office on 14th October 1914.<sup>8</sup>

---

<sup>2</sup> *Southern Nigeria Blue Book of Statistics*, 1909, pp. J6-J7.

<sup>3</sup> *Southern Nigeria Annual Report on the Postal Department for the Year 1909*, p. xi.

<sup>4</sup> *Southern Nigeria Annual Report on the Postal Department for the Year 1909*, p. xii.

<sup>5</sup> *Southern Nigeria Annual Report on the Postal Department for the Year 1909*, p. xiii.

<sup>6</sup> *Southern Nigeria Blue Book of Statistics*, 1910, pp. N214-N215.


<sup>7</sup> *Southern Nigeria Blue Book of Statistics*, 1911, pp. N200-N201.

<sup>8</sup> 'Post Office Notices', *Nigeria Gazette*, 28 October 1915, p. 566.



*The men  
folks even are  
work as the  
Jeds*

**POST CARD**



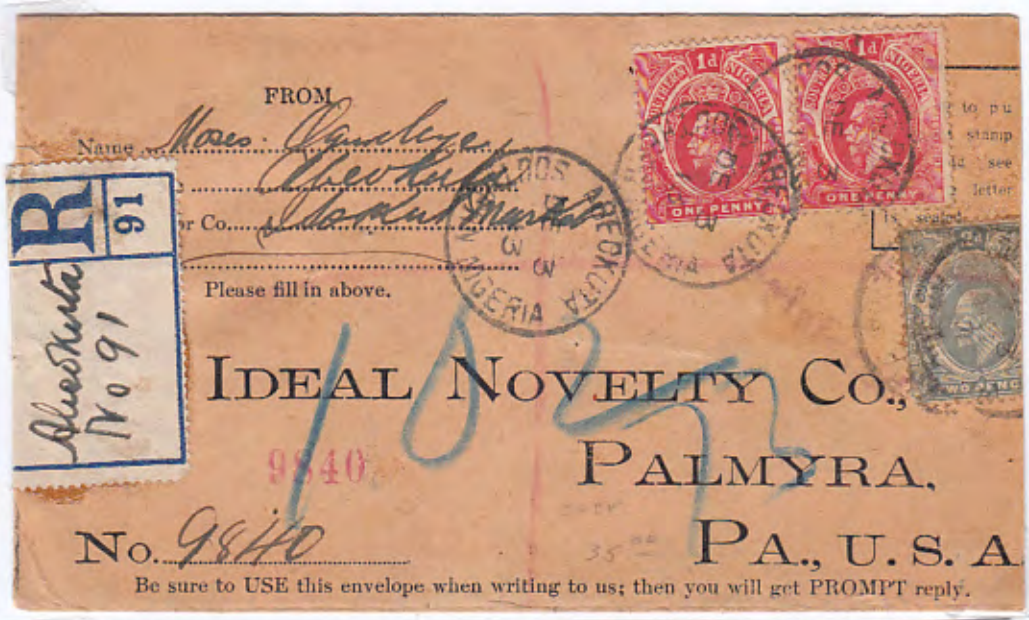
ADDRESS ONLY

*R. J. Bentley Esq  
Akalo  
Ainsdale  
Northport  
England*

CORRESPONDENCE

*My  
dear  
friend  
I have  
just  
received  
your  
letter  
of  
the  
11th  
and  
am  
glad  
to  
hear  
from  
you  
and  
to  
hear  
that  
you  
are  
all  
well  
I  
am  
well  
at  
present  
and  
hope  
to  
hear  
from  
you  
again  
soon  
I  
am  
yours  
truly  
R. J. Bentley*

*Remains are still in 2  
generally unaltered with  
standing in 1/2 in 1/2 in 1/2 in 1/2 in  
very well. Mueselburg*



Registered cover to Palmyra U.S.A. with  $2 \times 1''$  (5446) and  $1 \times 2''$  (5435) on face and  $1 \times \frac{1}{2}''$  (5645) on reverse: all tied by Atokuta cds type 6 of 3<sup>rd</sup> December 1913 and carrying early printed registered label R/91 with also Kobokuta No. 91 in mts. Backstamped large oval registered d.s. Type 3(c) of 3<sup>rd</sup> Dec 1913 and Palmyra P.A. Registered double ringed cds 3 Jan 1914.

## 1918-28

During a rising that occurred in the Abeokuta Province a section of the telegraph lines was destroyed and the main lines were interrupted between the 12th June and the 19th July 1918.<sup>9</sup>

In 1918, Money Orders issued and paid at Abeokuta and Oshogbo, and Savings Bank business is transacted at Oshogbo.<sup>10</sup>

In 1923, burglaries occurred at the Kaduna, Jos and Igbein Hill Post Offices, there was loss of postal matter in only one of these cases and in no case was anybody arrested.<sup>11</sup>

In 1924, a certain amount of inconvenience was occasioned by a change in the train services between Lagos and Abeokuta in September. Until then the Lagos-Ibadan train which carried a Travelling Post Office stopped at all station and thus afforded postal facilities at these. The acceleration of the train cut off 7 stations and it has been a matter of some difficulty arranging for services to these places. In themselves they are relatively important from the Post Office point of view and it is obviously not expedient to run a second Travelling Post office over the same line the same day as the Lagos-Abeokuta train. It was suggested to the Chamber of Commerce that members should assist by allowing one of their representatives at each station to act as Postal Agent but so far no agreement has been reached.<sup>12</sup>

Public works: Post Office, Abeokuta, £2,140 budget; started 6th August 1926, unfinished in 1927, spent so far £1,999.6.0.<sup>13</sup>

In 1926, a new post office is in the state of erection at Ibara, Abeokuta.<sup>14</sup>

In 1927, the transfer of the departmental office from Igbein Hill to Ibara at Abeokuta was carried through without public inconvenience.<sup>15</sup> Ibara was raised to the rank of Head Office thereby giving the public increased facilities.<sup>16</sup> The Igbein Hill Post Office in the Residency grounds at Abeokuta was transferred to the new Post and Telegraph Office at Ibara on Sunday 15th January 1928.<sup>17</sup>

---

<sup>9</sup> *Annual Report on the Posts and Telegraphs Department, Nigeria for the year 1918*, p. 1.

<sup>10</sup> *Nigeria Gazette*, 21 February 1918, p. 77.

<sup>11</sup> AR, 1923, p. 4.

<sup>12</sup> *Post and Telegraphs Annual Report, 1924*, p. 6.

<sup>13</sup> *Nigeria Blue Book, 1927*, pp. 86-87.

<sup>14</sup> AR, 1926, p. 31.

<sup>15</sup> AR, 1927, p. 6.

<sup>16</sup> AR, 1927, p. 6.

<sup>17</sup> AR, 1928, p. 8.





**R** Igbein Hill  
No. 258

*Registered*



*Messrs*

*Montgomery Ward & Co.  
Chicago Avenue  
Chicago U.S.A.*



*Foreign Division*

63198



**Igbein Hill**

On 29.2.08 a notice was published that postal orders & stamps were sold at the District Commissioner's office Igbein Hill, Abeokuta. It became a S.B. Office on 1.9.08. In December 1909 moved from the District Commissioner office to a new building on the main road at the foot of Residency Hill. Under Southern Nigerian administration until 31 December 1913. 29.2.08-(23.3.28) closed by 1932 15 150



D2 (7.6.08)-(19.7.20)



D3 (18.9.20)-(23.3.28)  
Set with time from  
(20.12.24)

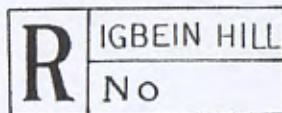


D4 (28.11.21)-(9.6.22)  
Val x 2

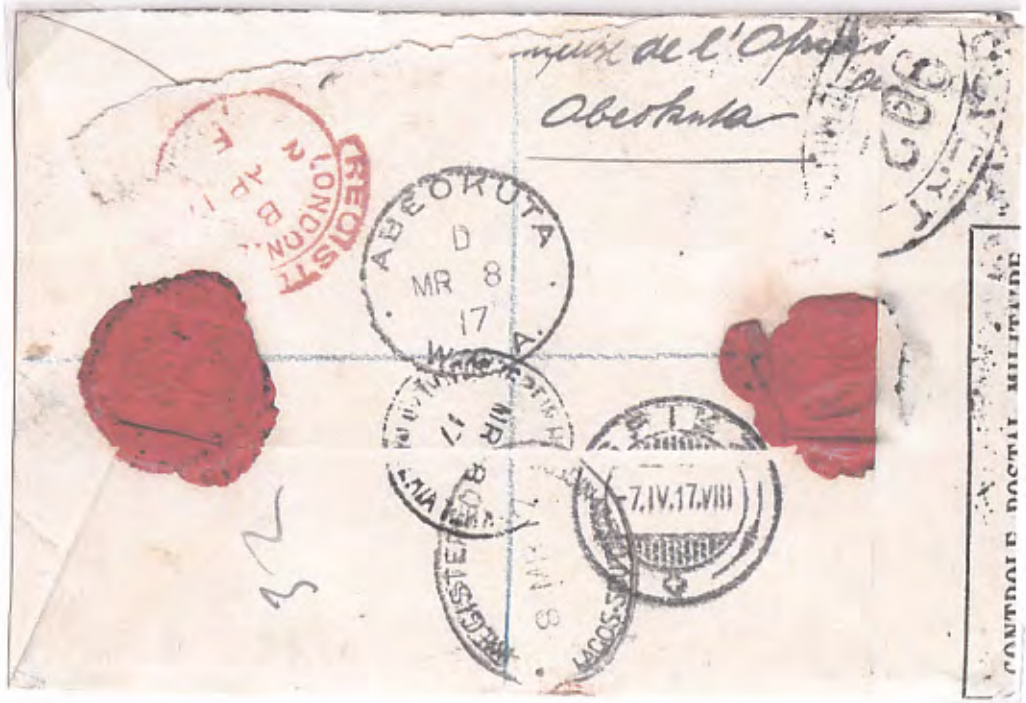
**Registered (R)**



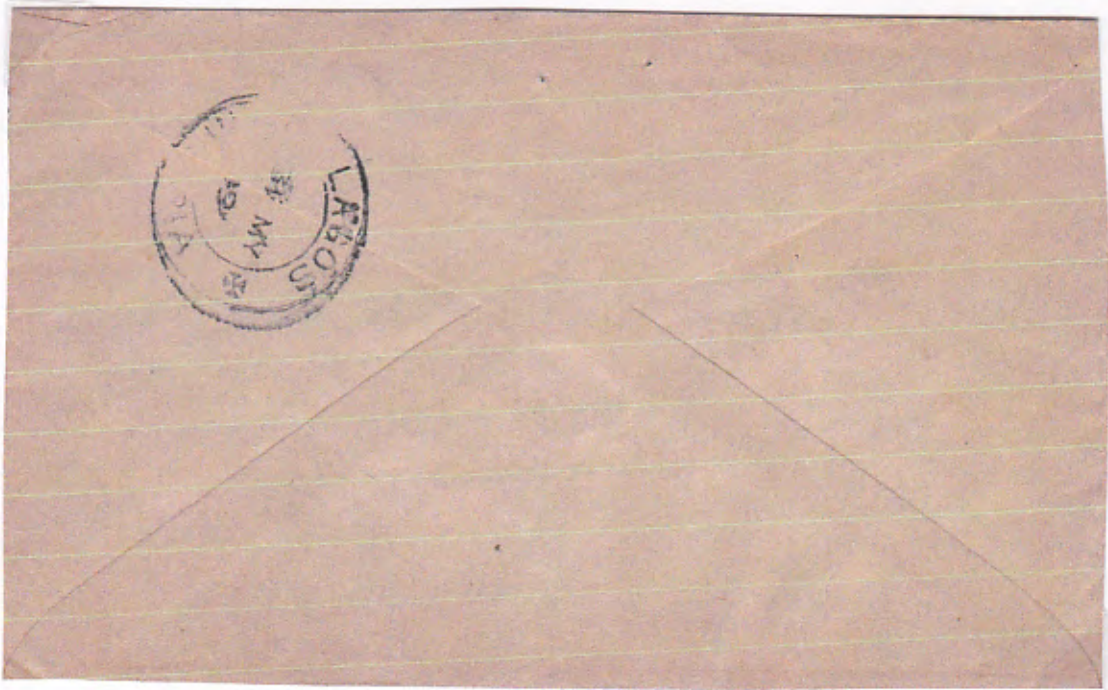
R2 (16.12.26)-(28.7.27)



R4 (14.3.10)-(1.4.14)







Via Liverpool



Monsieur et Madame E. Billerot  
Pont Point de la Station

France

Le Raincy

Service et bte

Sent by F. Brachan  
Rue de la Poste  
West Africa Nigeria





Dear Sir.

Trusting these few lines will meet you in a good conditional health with an equanimity of mind. Will you favour me in sending me your cheapest and illustrated catalogue of 1922 send it to me per returning mail. It is my willing to be reconvening with you for ever. ~~and I~~ I will recommend you to all of my credible friends ~~and I~~ I shall be thankful for it. Please as soon as you send the catalogue, you will get money from me to order from you. Thanks in anticipation.

I am,  
your devoted friend. Aderina



REGISTERED LETTER  
 THIS LETTER MUST BE GIVEN TO AN OFFICER OF POST OFFICE TO BE REGISTERED, AND A RECEIPT OBTAINED



MUST BE PLACED HERE.

256

G. Bell & Sons Ltd  
 York House  
 Portugal Street  
 London W.C.

**R** Abeokuta  
 No. 691





REGISTERED LETTER.

THIS LETTER MUST BE GIVEN TO AN OFFICER OF THE POST OFFICE TO BE REGISTERED, AND A RECEIPT OBTAINED FOR IT. THE ADDRESS MUST BE WRITTEN ON THIS SIDE.

704K

William Watson

24 Grey Street New Castle on Tyne

England



FEE PAID.





REGISTERED LETTER.

THIS LETTER MUST BE GIVEN TO AN OFFICER OF THE POST OFFICE TO BE REGISTERED, AND A RECEIPT OBTAINED FOR IT. THE ADDRESS MUST BE WRITTEN ON THIS SIDE

793



Mr W. Watson

24 Grey Street  
Northampton  
England



FEE PAID.



Mr W. Watson

24 Grey Street  
New Castle on Tyne  
Northampton  
England



*The Prince of Wales at Aro, Abeokuta.*

POST CARD.

CORRESPONDENCE.

ADDRESS.



"C. M. S. Bookshop, Lagos." Photo "Central News"

NIGERIA.



THE PRINCE TAKING WALKING EXERCISE DURING THE 700-MILE JOURNEY—KANO TO LAGOS.



REGISTERED LETTER.

THIS IS GIVEN TO AN

OFFICER OF THE POST OFFICE  
RECEIPT OBTAINED FOR IT.  
WRITTEN ON THIS SIDE.

**R**  
Igbein Hill  
No. 918

*Messrs*

*Howard & Bond, Ltd*

*85, New Oxford Street  
London, W.C.1.*



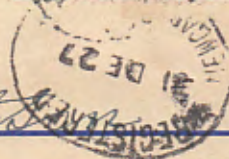
FEE PAID.





**R** Abeokuta  
No. 515

97



Mr William

Watts

24, Grey Street,

Newcastle on-Tyne

England



**REGISTERED LETTER.**

THIS LETTER MUST BE GIVEN TO AN OFFICER OF THE POST OFFICE  
TO BE REGISTERED, AND A RECEIPT OBTAINED FOR IT.  
THE ADDRESS MUST BE WRITTEN ON THIS SIDE.



FEE PAID.

**R** IBARA  
No. 152

REGIST

MUST BE  
E REGIST  
DDRESS



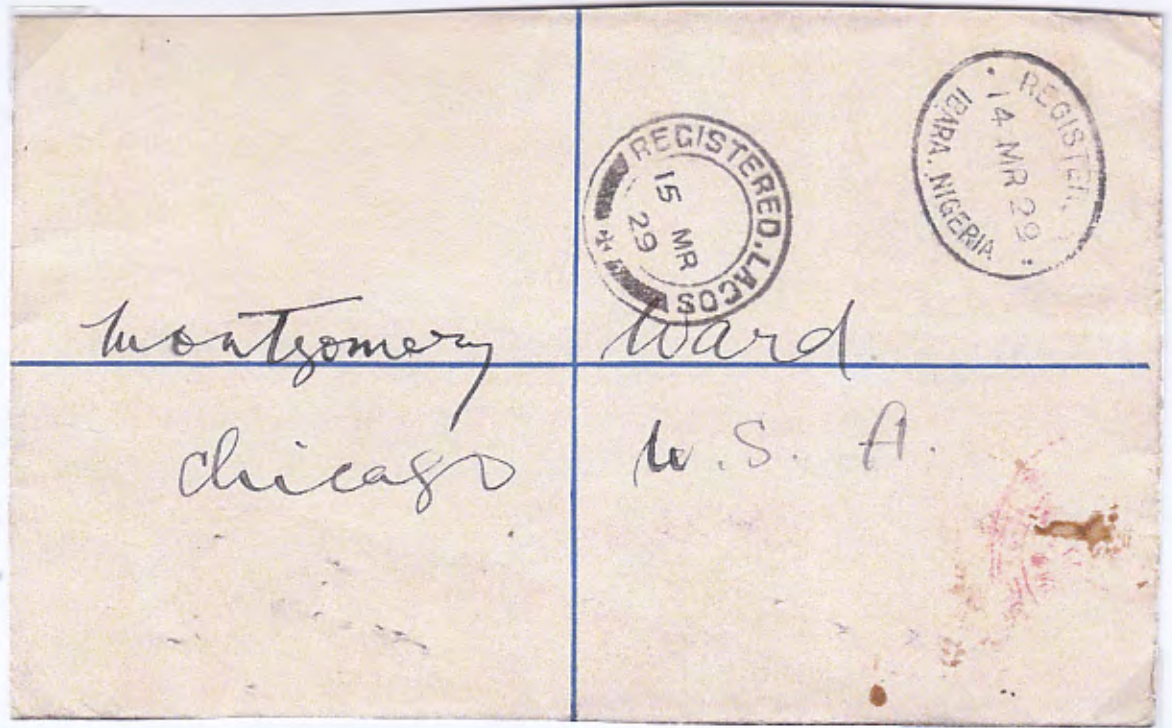
REGISTERED

Montgomery Ward  
Chicago Ill  
u. s.



FEE PAID.





## 1930s

Special telegraphic arrangements were made at Abeokuta on the occasion of the Egba Centenary Celebrations in October 1930 to cope with the increased traffic due to the influx of visitors. In addition to the normal telegraph outlets, a special duplex circuit was super-imposed upon the Lagos-Ibadan telephone trunk line, and extra staff provided. The arrangements proved very satisfactory and the additional heavy traffic was handled without difficulty.<sup>18</sup>

During 1930, public telephone call boxes were installed at the Post Offices at Jos, Bukuru, Aba, Ebute Metta and Abeokuta.<sup>19</sup>

In 1930, defalcations involving the loss of post office funds occurred at Ebute Metta, Abeokuta, and Agenebode, a case of affixing used stamps on telegrams at Aba came to light...in each case the conviction of the offenders was secured.<sup>20</sup>

In 1931, one case of embezzlement in connection with the delivery of parcels at Ibara was discovered, but the offender absconded and is still at large.<sup>21</sup> Eventually, in October 1934, he was apprehended and convicted.<sup>22</sup>

In 1931, the office at Abeokuta (Imo) was reduced to a branch office.<sup>23</sup>

PO offices at stations:

Abeokuta (Imo)	1 September 1931	Closed
Imo (Abeokuta) Branch Office	1 September 1931	Opened for Stamps and Postal Orders only

J. C. Okani, 3<sup>rd</sup> Class Postal Clerk and Telegraphist, died at Abeokuta, 25th September 1931.<sup>24</sup>

---

<sup>18</sup> AR, 1930, p. 6.

<sup>19</sup> AR, 1930, p. 7.

<sup>20</sup> AR, 1930, p. 10.

<sup>21</sup> AR, 1931, p. 9.

<sup>22</sup> AR, 1934, p. 9.

<sup>23</sup> AR, 1931, p. 1.

<sup>24</sup> 'Obituary', *Nigeria Gazette*, 8 October 1931, p. 546.

In 1932, a man attempting to pass 21 counterfeit coins at Ibara Post Office was detected and eventually sentenced to three years imprisonment.<sup>25</sup>

The acceptance and delivery of registered correspondence was introduced at the Imo (Abeokuta) Branch office in October 1933.<sup>26</sup>

In 1933, a messenger at Ibara was convicted and sentenced to imprisonment for obtaining money by means of a trick.<sup>27</sup>

In 1933, at Ibara some slight damage was done to the main door, but nothing was stolen.<sup>28</sup>

In 1934, there was an attempt to burgle Imo Branch Office (Abeokuta), but it was unsuccessful and no loss of public money or property resulted and very little damage to the building was done.<sup>29</sup>

J. A. Miller, late 1<sup>st</sup> Class Postmaster, died at Abeokuta, 24th May 1934.<sup>30</sup>

John Belo XIV, Assistant Lineman, died at Abeokuta, 24th November 1934.<sup>31</sup>

Igbara PO change of name to Abeokuta PO, opened 1st January 1936.

On 21st October 1937, Lafenwa Postal Agency opened.<sup>32</sup>

Ilugun Railway PA, Abeokuta, opened 21st March 1938.

Opeji PA, Abeokuta, opened 20th May 1938.

Wasimi PA, Abeokuta, opened 21st May 1938.

Ijoko PA, Abeokuta, opened 3rd February 1939.

Abalabi PA, Abeokuta, opened 15th February 1939.

Idogo Railway PA, Abeokuta, opened 1 November 1939.

---

<sup>25</sup> AR, 1932, p. 7.

<sup>26</sup> AR, 1933, p. 1.

<sup>27</sup> AR, 1933, p. 9.

<sup>28</sup> AR, 1933, p. 9.

<sup>29</sup> AR, 1934, p. 9.

<sup>30</sup> 'Obituary', *Nigeria Gazette*, 19 July 1934, p. 466.

<sup>31</sup> 'Obituary', *Nigeria Gazette*, 13 December 1934, p. 830.

<sup>32</sup> AR, 1937, p. 3.

**R** Abeokuta  
No. 477

**REGISTERED LETTER.**  
THIS LETTER MUST BE GIVEN TO AN OFFICER OF THE POST OFFICE  
TO BE REGISTERED, AND A RECEIPT OBTAINED FOR IT.  
THE ADDRESS MUST BE WRITTEN ON THIS

12  
Mr. W. Watson

REGISTERED  
12 DE 30  
ABEOKUTA NIGERIA

24 Grey Street  
Newcastle-on-Tyne

FEE PAID.



REGISTERED  
2 JA 31  
ABEOKUTA NIGERIA



G. ~~M<sup>23</sup>~~ Steward Esq:

~~Ashbourne~~

Elleray Bank

Windermere

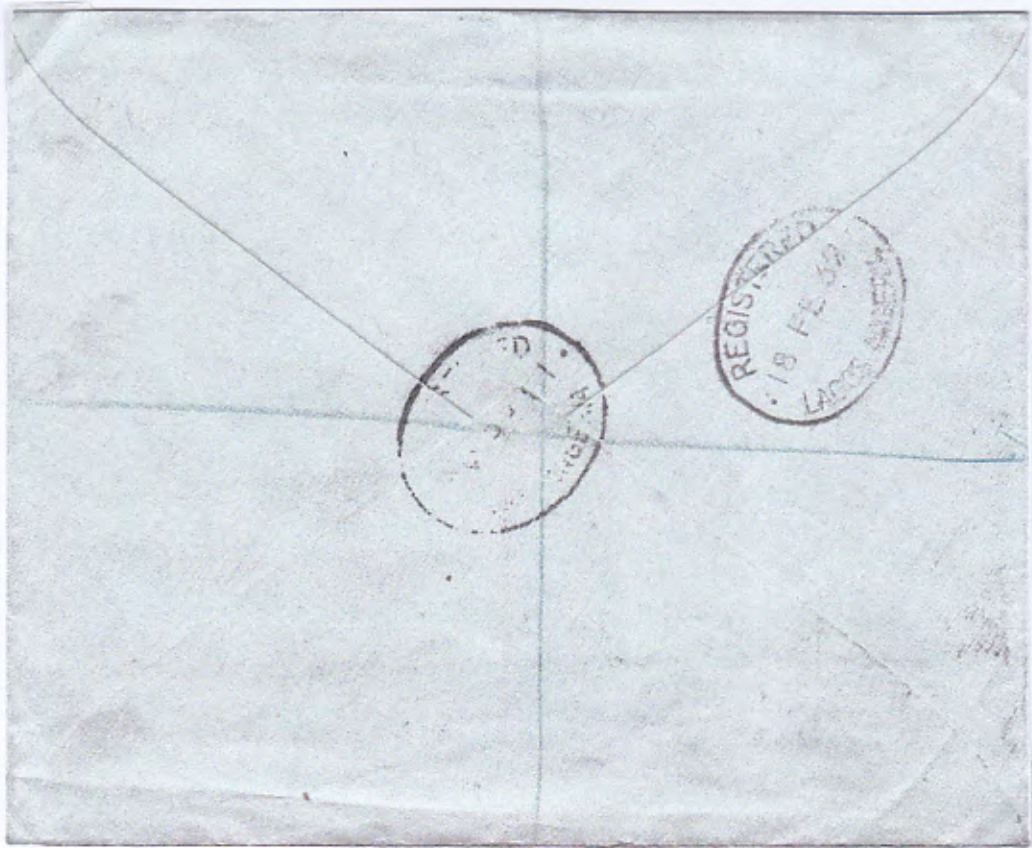
**R** IBARA  
No. 474

REGISTERED  
18 FEB 32  
IBARA, NIGERIA



Mr. Climax Motoren Werke Und  
Schiffs Werft Linz A.G.  
Schwarzenberg Platz 18.  
Wien 1.

*[Handwritten flourish]* 24



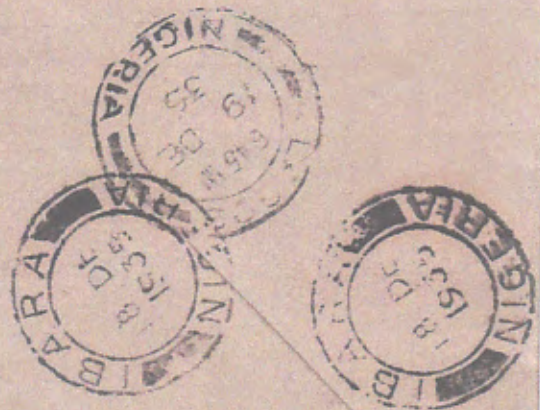


Messrs . . .

Hermann Maute,

Dye & Chemical Works,

Reutlingen ( Germany)





2 D. TO PAY  
LIABLE TO  
LETTER RATE  
[3.33]

T



Andrew Baxendale & Sons,  
The School and College Bookseller,  
14-15 Chambers Street, Edinburgh, 1.



The Velo Company,  
179, Michigan Ave.,  
Chicago Ill.



USE  
AIR MAIL  
SERVICES



NIGERIA

ABEOKUTA



The cover to Billingshurst, Sussex has 6d worth of adhesives (although the postage rate of 2d per ounce applied at that time) cancelled by a 30mm double circle (Jones Type 18) dated 12<sup>th</sup> March 1936. A 30mm double circle (Jones Type 17) dated 13<sup>th</sup> March 1936 transit mark was applied at Ibadan.

The letter got opened or damaged in transit and so sealing tape was applied on arrival in the UK. Two strikes of 'Loxwood, Billingshurst, Sussex' double ring canceller dated 24<sup>th</sup> March 1936 tie the tapes to the cover.



J. K. Peile Esq  
Agriculture Dept  
Abeokuta





Franklin Die Castings Co. Inc  
220 W. N. Bank Drive  
Chicago U. S. America



AIR MAIL SERVICES  
USE

ABEOKUTA  
NIGERIA  
4 DE  
1936

LAGOS  
NIGERIA  
3 DEC  
1936

# Arthur Evelyn Francis Murray

- Born 28th September 1888
- Son of Arthur Silver Murray and Rose Evelyn (Woodhouse) Murray
- Brother of Anne Evelyn Charlotte de la Trémouille Murray (1896-1941), Kenneth Andrew Silver Murray (1904-91), and Douglas Vivian Murray (1905-n.d)
- Educated Marlborough School and Exeter College, University of Oxford – Bachelor of Arts
- Became Assistant District Commissioner, Southern Nigeria, 1912
- Divisional Officer – Calabar, c. 1921-28<sup>1</sup>
- Married Louise Isabelle (Delacombe) Murray, daughter of Lt.-Col. Addis Delacombe and Emma Louise Mary Leland, 21st May 1927
- They had two children:
  - Jean Evelyn Louise Murray, born 6th January 1932
  - James Stewart Murray, born 26 November 1941
- Class I, Grade I Administrative Service, 1928
- Admitted to Middle Temple in 1929 entitled to practise as a barrister
- Secretary to Commission of Inquiry into Disturbances in South Eastern Provinces, 1930
- Acting Secretary for Native Affairs, 1930
- Resident, Oyo Province, 1932
- Resident, Abeokuta Province, 1933
- Staff grade, 1935<sup>2</sup>
- Awarded the Silver Jubilee Medal in 1935
- Senior Resident of the Administrative Service, Nigeria
- Resident Onitsha Province, 1937
- Awarded the Coronation Medal in 1937
- Senior Resident, Cameroon Province, c. 1941
- Lived at Bethany, Banhoek, and Cape Province, South Africa
- His wife, Louise Murray, died March 1996.

---

<sup>1</sup> Bodleian Library, Oxford: MSS.Afr.s.1498: AEF Murray, Diaries of travels by political officers in the Old Calabar division of Nigeria, mostly by A.E.F. Murray, 1921-27 (mainly typescript).

<sup>2</sup> A.H.M. Kirk-Greene (1991), *A Biographical Dictionary of the British Colonial Service, 1939-1966*. London: Hans Zell, p. 261; <http://www.thepeerage.com/p2265.htm#i22648>, accessed 27th August 2019.









The  
 Harcourt  
 A. G. F. Murray Esquire  
~~Senior Resident~~  
 Abeokuta  
~~Public Service~~  
~~c/o Nigerian Secretariat~~  
~~Lagos, Lagos~~  
 Nigeria.






**R** IBARA  
No. 920



*To* the Resident  
Abeokuta.

136



**REGISTERED LETTER.**

THIS LETTER MUST BE GIVEN TO AN OFFICER OF THE POST OFFICE TO BE REGISTERED, AND A RECEIPT OBTAINED FOR THE ADDRESS MUST BE WRITTEN ON THIS SIDE.

OFFICER OF THE POST OFFICE  
RECEIPT OBTAINED FOR  
WRITTEN ON THIS SIDE.



FEE PAID.

TEL. ABEOKUTA 1.

THE RESIDENCY,  
ABEOKUTA,  
NIGERIA.



A. E. Z. Murray Esq.,  
c/o Lieut. Colonel A. DeLacombe, D.S.O.,  
Shrewton Manor,  
near Salisbury,  
England. Wilt's.

BY AIR MAIL  
PAR AVION

air mail



Miss Jean Murray,  
c/o Lt. Colonel A. Odunmbi, D.S.O.,

Shrewton Manor,  
near Salisbury,  
Wilt.

England.

TEL. ABEOKUTA 1.

THE RESIDENCY,  
ABEOKUTA,  
NIGERIA.

8th February, 1936.

The first Nigerian Air mail  
for Jean's stamp collection.

Daddy.

SALESBOROUGH  
9 AM  
8 FEB  
1936



A. E. F. Murray Esq.  
The Residency  
Abokuta  
Nigeria



Mrs Murray  
~~Stewarton Manor~~  
Ditto The Residency  
Abokuta  
Nigeria

KANGAROO  
16 FEB  
NIGERIA

ABOKUTA  
19 FEB  
NIGERIA

ABOKUTA  
19 FEB  
NIGERIA

ABOKUTA  
19 FEB  
NIGERIA

**FR** Lagos  
No. 204

**REGISTERED LETTER.**

GIVEN TO AN OFFICER OF THE POST OFFICE  
REGISTERED, AND A RECEIPT OBTAINED FOR IT.  
THE ADDRESS MUST BE WRITTEN ON THIS SIDE.



The Hon

411

The Resident

Egba Province

Abeokuta



FEE PAID.

**R**

**REGISTERED LETTER.**

THIS LETTER MUST BE GIVEN TO AN OFFICER OF THE POST OFFICE  
TO BE REGISTERED, AND A RECEIPT OBTAINED FOR IT.  
THE ADDRESS MUST BE WRITTEN ON THIS SIDE.

**R** BADAGRY  
No. 275

The Resident

Abeokuta Province

Abeokuta

14



FEE PAID.



Abeokuta  
No. 225

REGISTERED LETTER.

THIS LETTER MUST BE GIVEN TO AN OFFICER OF THE POST OFFICE REGISTERED, AND A RECEIPT OBTAINED FOR IT. THE ADDRESS MUST BE WRITTEN ON THIS SIDE.



The Resident of  
Abeokuta Nigeria

201

FEE PAID.



<sup>1/2</sup>mo Abeokuta  
No. 741

REGISTERED LETTER.

THIS LETTER MUST BE GIVEN TO AN OFFICER OF THE POST OFFICE REGISTERED, AND A RECEIPT OBTAINED FOR IT. THE ADDRESS MUST BE WRITTEN ON THIS SIDE.



The Resident  
Abeokuta Division

Abeokuta

280

FEE PAID.





A. E. F. Murray, Esq.,

~~Shrewton Manor,~~

~~Near Salisbury,~~

~~WILTS.~~

The Residency  
Abokuta  
Nigeria



A. E. F. Murray Esq.  
The Residency  
Abokuta  
Nigeria

BY AIR MAIL  
PAR AVION



Mr Evelyn Murray  
The Residency  
Abokuta  
Nigeria

**R** <sup>140</sup> ABEOKUTA  
No. 28

**REGISTERED LETTER.**

MUST BE GIVEN TO AN OFFICER OF THE POST OFFICE  
BE REGISTERED, AND A RECEIPT OBTAINED FOR IT.  
THE ADDRESS MUST BE WRITTEN ON THIS SIDE.

140

35

The Resident

Abokuta

nigeria

FEE PAID.

REGISTERED



REGISTERED  
• 270036 •  
140-ABEOKUTA, NIGERIA

REGISTERED  
• 270036 •  
ABEOKUTA

REGISTERED  
• 270036 •  
140-ABEOKUTA, NIGERIA



REGISTERED LETTER.

THIS LETTER MUST BE PAID FOR AT THE POST OFFICE OF THE POST OFFICE TO BE PAID FOR AT THE POST OFFICE OF THE POST OFFICE IN THIS SIDE.

**R** Lagos  
No. 985



473  
To me

Resident



Residents Office  
Ibein Hill

Abesuta



FEE PAID.

+



The Resident

Residents Office

Ibein Hill

Abesuta



**R** ILAR O GISTERED LETTER  
No. 518

MUST BE GIVEN TO AN OFFICER OF THE  
REGISTERED, AND A RECEIPT OBTAINED  
THE ADDRESS MUST BE WRITTEN ON



*The Honourable*  
*The Senior Resident*  
*Abokuta Province*  
*Abokuta*

283



FEE PAID.

BY AIR MAIL  
PAR AVION



Mrs

A. E. F. Murray, ~~Secy.~~  
Shrewton Manor,  
near Salisbury,  
Wilts,  
ENGLAND.



"If God be  
with us,  
nothing is  
to be feared"



"Elephants  
naturally  
inherit its  
honour of  
hugeness"

BY AIR MAIL  
PAR AVION



M<sup>rs</sup> Evelyn Murray  
The Residency  
Abokuta  
Nigeria

BY AIR MAIL  
PAR AVION



M<sup>rs</sup> Evelyn Murray  
The Residency  
Abokuta  
Nigeria

BY AIR MAIL  
PAR AVION



M<sup>rs</sup> Evelyn Murray  
The Residency  
Abokuta  
Nigeria

BY AIR MAIL  
PAR AVION



M<sup>rs</sup> Evelyn Murray  
The Residency  
Abokuta  
Nigeria



ELDER DEMPSTER LINES,  
LIMITED.



Per Air Mail



A. Murray, Esq.,

The Residency,

Abeokuta,

N I G E R I A.

BRITISH WEST AFRICA.



BY AIR MAIL  
PAR AVION

AIR MAIL  
FIRST DESPATCH  
LAGOS—LONDON  
29-10-36.



Mrs Delacombe,  
Shrewton Manor,  
near Salisbury,  
Wilt.  
England.

BY AIR MAIL  
PAR AVION

AIR MAIL  
FIRST DESPATCH  
LAGOS—LONDON  
29-10-36.



Mrs Delacombe,  
Shrewton Manor,  
near Salisbury,  
Wilt.  
England.

BY AIR MAIL  
PAR AVION

AIR MAIL  
FIRST DESPATCH  
LAGOS—LONDON  
29-10-36.



Mrs Delacombe,  
Shrewton Manor,  
near Salisbury,  
Wilt.  
England.

BY AIR MAIL  
PAR AVION



Mrs Delacoste  
Shrewton Manor  
Salisbury  
Wilt  
England.



BY AIR MAIL  
PAR AVION

LONDON  
7 15PM  
13 NOV  
1936  
AIR MAIL



Mrs. Murray  
The Residency,  
Abeokuta,  
Nigeria

BY AIR MAIL  
PAR AVION



*W/sect*

A. R. F. Murray Esq.  
The Residency,  
Abeokuta,  
Nigeria.

BASIL MONTGOMERY & CO.  
- 77 -  
CORNHILL,  
LONDON,  
E.C.3.  
STOCKBROKERS

145PM  
27 NOV  
36

ABEOKUTA  
28 1/10  
NIGERIA

LAGOS  
4 215PM  
26 DE

ABEOKUTA  
5 DE  
36  
NIGERIA

BY AIR MAIL  
PAR AVION



Mrs Evelyn Murray

~~The Residency~~  
c/o Nigeria Regiment,  
Ibadan. ~~Abeokuta~~  
Nigeria



BY AIR MAIL  
PAR AVION



Mrs Evelyn Murray

~~The Residency~~  
c/o ~~the Nigeria Regiment~~ ~~Abeokuta~~  
Ibadan  
Nigeria



BY AIR MAIL  
PAR AVION

POST  
CARD

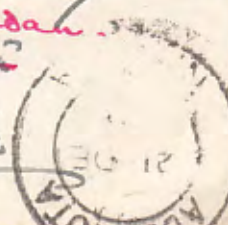
Communication—Correspondance



Best wishes for the  
new year —  
I am just off to  
Kenya in the  
winter —  
D. W.



Mrs Murray  
of Nigeria Regiment,  
~~The Residence~~  
Ibadan  
~~Abeokuta~~  
Nigeria



The Prospect  
Trowbridge  
Willis



POST OFFICE  
CHRISTMAS



A. E. Murray, Esq

~~The Resident~~

~~Abeokuta~~

~~Nigeria~~

~~West Africa~~

of Lt. Col. Delacombe,  
Shrewton Manor,  
Nr. Salisbury,  
Wilts.,  
England.

1d  
TO PAY  
723



A. E. Murray, Esq.

~~The Residency~~

~~Abeokuta~~

~~Southern Provinces~~

~~Nigeria~~

of Lt. Col. Delacombe,  
Shrewton Manor,  
Nr. Salisbury,  
Wilts  
England.

1d  
TO PAY  
723



USE  
AIR MAIL  
SERVICES



USE  
AIR MAIL  
SERVICES

BY AIR MAIL  
PAR AVION



Mr Evelyn Murray  
~~The Residency~~  
*C/o The Nigeria Regiment,*  
~~Abokuta~~  
Ibadan.  
Nigeria

BY AIR MAIL  
PAR AVION



Mr & Mrs Evelyn Murray  
~~The Residency~~  
*C/o The Nigeria Regiment,*  
~~Abokuta~~  
Ibadan.  
Nigeria  
W. Africa



BY AIR MAIL  
PAR AVION

To be returned  
by Air Mail  
if postage  
is not paid



A. E. F. Murray Esq.  
Lt. Col. A. Delacombe, S.O.O.,  
Shrewton Manor,  
Nr. Salisbury,  
Wiltshire,  
England.  
Nigeria

11/23

LAGOS  
4 DEC 4  
NIGERIA  
ABEOKUTA  
8 JAN 1937  
NIGERIA  
ABEOKUTA  
SERVICES  
AIR MAIL  
USE



A. E. T. Murray Esq.,  
The Residency,  
Ouissha.



PONT-ROYAL-HOTEL  
37, Rue du Bac  
7, Rue Montcalm  
PARIS



Cometini set  
posted under 17th.  
of August, 1937.

A. E. T. Murray



A. E. T. Murray Esq.,  
 The Residency,  
 Onitsha,  
 Southern Provinces,  
 Nigeria.

Registered.

**R** AHODA  
 No. 848

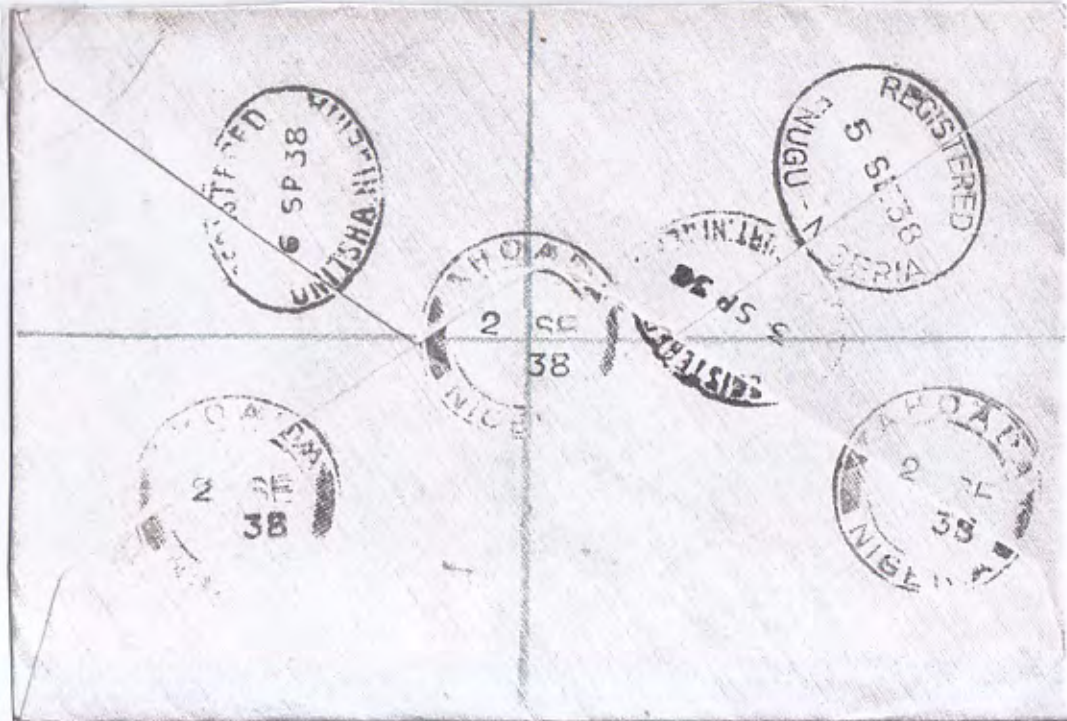


Mrs Murray.

The Residency,  
ONITSHA.

Southern Provinces.

174

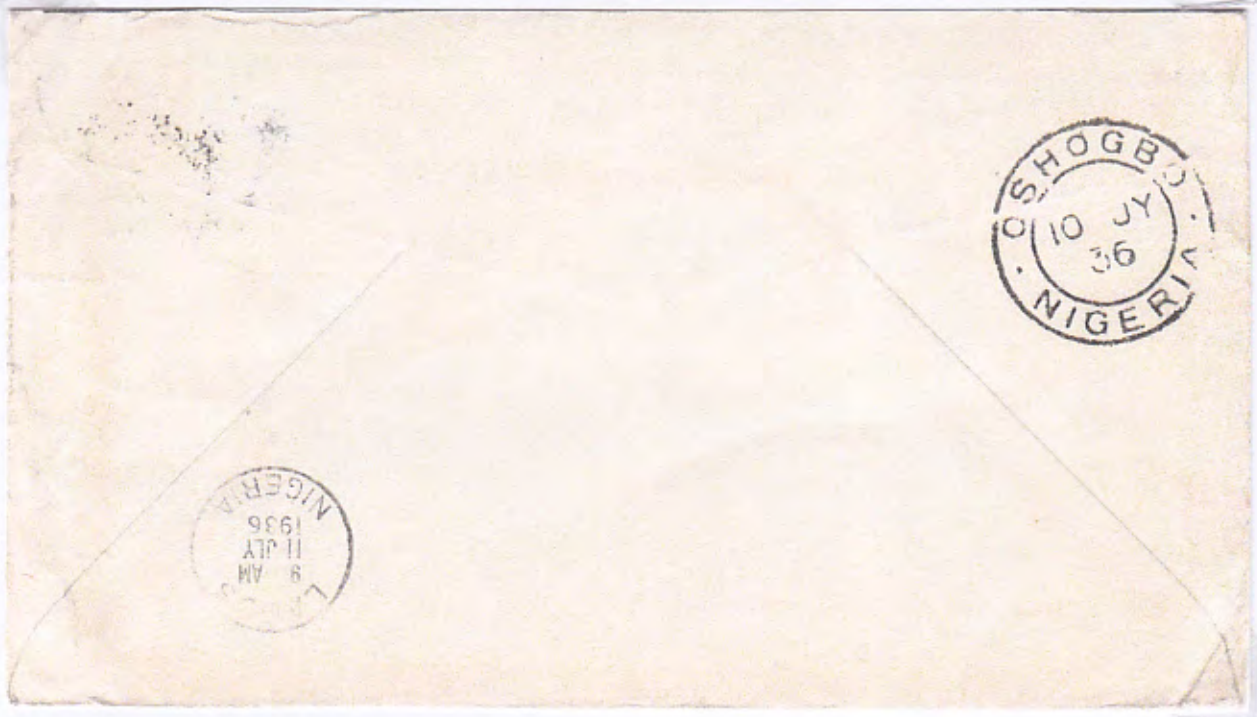


J. Christie Pool  
Abeokuta, Nigeria  
West Africa



The Literary Digest  
354-360 Fourth Ave.  
New York, N.Y.  
U.S.A.

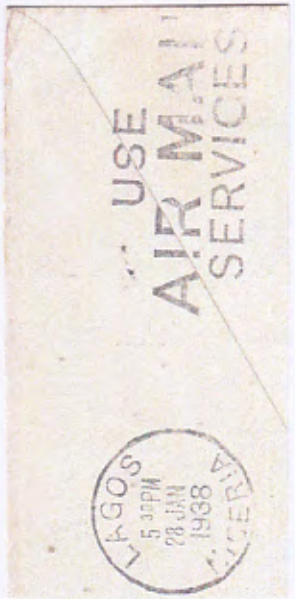
AUG 5 1936



Esther Olsen  
Idi Aba, Abeokuta



Dr. and Mrs. L. Long  
Fenton, Michigan  
U.S.A.





COMMERCIAL PAPERS



The Rev. Dr. F. J. Wyeth,  
The Close,  
Storrington,  
Sussex.



**R** ABEOKUTA  
No. 602

REGISTERED LETTER.

IT BE GIVEN TO AN OFFICER OF THE POST OFFICE  
REGISTERED, AND A RECEIPT OBTAINED FOR IT.  
ADDRESS MUST BE WRITTEN ON THIS SIDE.  
THIS ENVELOPE DOES NOT INCLUDE POSTAGE

*Wright & Co (Old Hill) Ltd*  
*Old Hill*  
*Staffordshire*  
*ENGLAND*

FEE PAID.



**CENSOR**

**146**



Messrs Buttes Watch Co Ltd.;  
Buttes,  
Switzerland.

If undelivered, please return to:-

T. S. Jolaosho,  
Managing Director,  
Head Office,  
Shapon, Abeokuta,  
West Africa.



P.C. 66

**OPENED BY**



## 1940s-50s

In 1944-45, the sorting office at Abeokuta has been extended.<sup>33</sup>

In 1944-45, the mail services between Lagos, Abeokuta and Ibadan have been accelerated by the use of good trains for the conveyance of mails.<sup>34</sup>

In 1945-46, extension to the existing office was made at Imo (Abeokuta).<sup>35</sup>

In 1949-50, new nests of Private Boxes were installed at Abeokuta.<sup>36</sup>

In 1951-52, a new pillar box was installed at Abeokuta.<sup>37</sup>

In 1952-53, house-to-house delivery was introduced at Umuahia and Owerri, and additional town deliveries were provided at Abeokuta.<sup>38</sup>

In 1953-54, extended deliveries were provided for at Abeokuta.<sup>39</sup>



*New design of post office—Totoro B.O., Abeokuta*

<sup>33</sup> AR, 1944-45, p. 1.

<sup>34</sup> AR, 1944-45, p. 1.

<sup>35</sup> AR, 1945-46, p. 4.

<sup>36</sup> AR, 1949-50, p. 6.

<sup>37</sup> AR, 1951-52, p. 10.

<sup>38</sup> AR, 1952-53, p. 9.

<sup>39</sup> AR, 1953-54, p. 6.

PRIVATE.

  
BY AIR MAIL  
PAR AVION



Mr. J.D.C.Mackay, F.L.A.A., F.C.I.S.,  
Principal,  
The School of Accountancy,  
2, West Regent Street,  
Glasgow, C.2.

From

A.S.Coker,  
The Treasury,  
Imo, Abeokuta, Nigeria.







The School of Accountancy,  
Regent House  
Glasgow C. 2.

GLASGOW C. 2.

JAMES Ode. OLU-TAIWO  
% LISHABI COMMERCIAL COLLEGE,  
ABEOKUTA.  
B.W.A.

To:



Minerva.  
À Villeret,  
Switzerland

Giaola Patent Medicine Supply Stores  
Adesina's Compound, Clebe  
Street, Ijemo Abeokuta



T T



JOHN A. MARSHALL COMPANY,  
INCORPORATED INTERNATIONAL BUILDING,  
NEW ORELEANS 12, U. S. A.



Sender: JAMES ADE SOTOMI,  
c/o LISABI SCHOOL,  
ABEOKUTA,  
NIGERIA,  
B.W.A.

~~70000~~

56554

REGISTERED NGURU  
R. 605

The Postal Agent,

Masayi-Egbado Postal Agency,

Masayi-Egbado,

Abeokuta Province.



From A. Pretious, Nguru.





WHYTE RIDSDALE & Co., LTD.,  
3 BAVIS MARKS  
LONDON. EC. 3.



420

REGISTERED  
7 MAR 49



CITY SALE + Exchange (1929) LTD.  
90 - 94 FLEET STREET,  
LONDON E. C.

Inv AT  
R 861



Sender:- J. O. OLUMBE,  
THOMAS Ewedairo,  
Adegenro, Press,  
P. O. Box 60,  
IBARA-ABEOKUTA,  
NIGERIA.  
B. W. A.

REGISTERED  
7 MAR 49  
IBARA-ABEOKUTA NIGERIA

REGISTERED  
7 MAR 49  
IBARA-ABEOKUTA NIGERIA

REGISTERED  
7 MAR 49  
IBARA-ABEOKUTA NIGERIA

BY AIR



To. Joan's Cottage.

203. Lanivet, Bodmin  
Cornwall,  
England.

Abbeokuta  
P 223

Reply to: Mr. Demostote Ajinde Adesina &  
to Mr. I.O. Oyebanjo  
1 Shanyin Street  
Abbeokuta  
Nigeria



BY AIR MAIL  
PAR AVION

IR



MESSRS W. & G. FOYLES LTD  
BOOKSELLERS  
119-125 CHARING CROSS RD.  
LONDON W.C.2

R  
No. 706

From G. A. Fayemi,  
Methodist School,  
Itesi, Abeokuta  
NIGERIA





BY AIR MAIL

AIR LETTER

IF ANYTHING IS ENCLOSED  
THIS LETTER WILL BE SENT  
BY ORDINARY MAIL.

Dear A. B. Carlton;

Yours came to hand on 11<sup>th</sup> Oct. 1950  
with your explanations about used stamps.  
I have many stamps of 1<sup>d</sup>  
worth and 1/2 two. But you  
said you are not in need.  
I have a few used stamps  
of 2<sup>d</sup> worth which is 12  
stamps. In my own decision  
I say it is too small to send it.  
If you want me to send the  
12 used stamps let me know  
in time  
But I want you to render  
help about 1<sup>d</sup> & 1/2<sup>d</sup> stamps  
because I have about 200  
of them which belong to Nigeria  
alone.

Benjamin S. Akinpelu Washerman Esq.  
Idi-Ori Village  
Aro Railway Station  
Ab. Nigeria  
10. 12. 50

Hoping to hear from  
you soon.

If you have catalogue  
of another articles  
send it to me too.

If you need another  
articles of Nigeria you  
may write to me.

I am  
sincerely yours  
B. S. Akinpelu  
Washerman

erased



104204



Miss E. W. Fauch,  
Poplars,  
Iheyden Bois,  
Epping,  
Essex.

Caro  
in  
NIGERIA

BY AIR MAIL  
PAR AVION

SEA MAIL



John Rodway Esq,  
Bura,  
Hawkestone,  
Walmer,  
Deal,  
Kent.  
England.

c/o



POST CARD

THE ADDRESS TO BE WRITTEN ON THIS SIDE



52

*1/100*  
TH. RIEBIE  
Schwenningen/  
Neckar  
Germany

ENIMABITIRE TRADING STORES

IMPORTER & EXPORTER

c/o. P. & T. Ibarakoba, Kuta Date 17<sup>th</sup> Jan. 1952  
Dear Sirs/ B.W.A.

With great pleasure and reasonable interest of business, we attempt to contact your Esteem Firm.

Firstly for mutual co-operation and Secondly for trade partnertship.

Our Trade's rule here: Samples must be first sent to us. Orders in quantities will follow. Reason of asking for Samples: These will show us and our customers, Superior, quality and thickness of your products.

We are dealing in all kinds of goods, e.g. Watches, Clocks, Shoes, Ladies Hats, Men Hats, Lamps, Bicycle parts, Hardwares, Thread, Wool, Touch lights, Sewing machine and parts, Rug, Cigarette-lighters, Cigarette containers, and Mouth-organs etc. etc. *Cuckoo clock, clock*

If prices are Competitives enough a reasonable business will follow immediately. Sole Agents are needed.

Pass our Address to Business Friends or Firms.

We are waiting for Urgent reply.

Yours Faithfully,

*Abubakar*  
MANAGER

ABEOKUTA  
**R** No. 594

BY AIR



ABEOKUTA

ABEOKUTA

The National Provincial Bank Ltd.,  
31 Corn Street,  
Bristol,  
England.

G.K. Clifton,  
U.A.C LTD,  
ABEOKUTA  
NIGERIA.

ABEOKUTA NIGERIA  
4 5P. 53

ABEOKUTA NIGERIA  
4 5P. 53



ABEOKUTA NIGERIA  
4 5P. 53

The Raleigh cycle Coy. LTD.  
Nottingham St.  
ENGLAND.

Registered oval delestamp.



REGISTERED.

BY AIR MAIL  
PAR AVION



ABEC



Mrs. J. Broad,  
9 Florida Gardens,  
Efford, Plymouth,  
Devon, England.

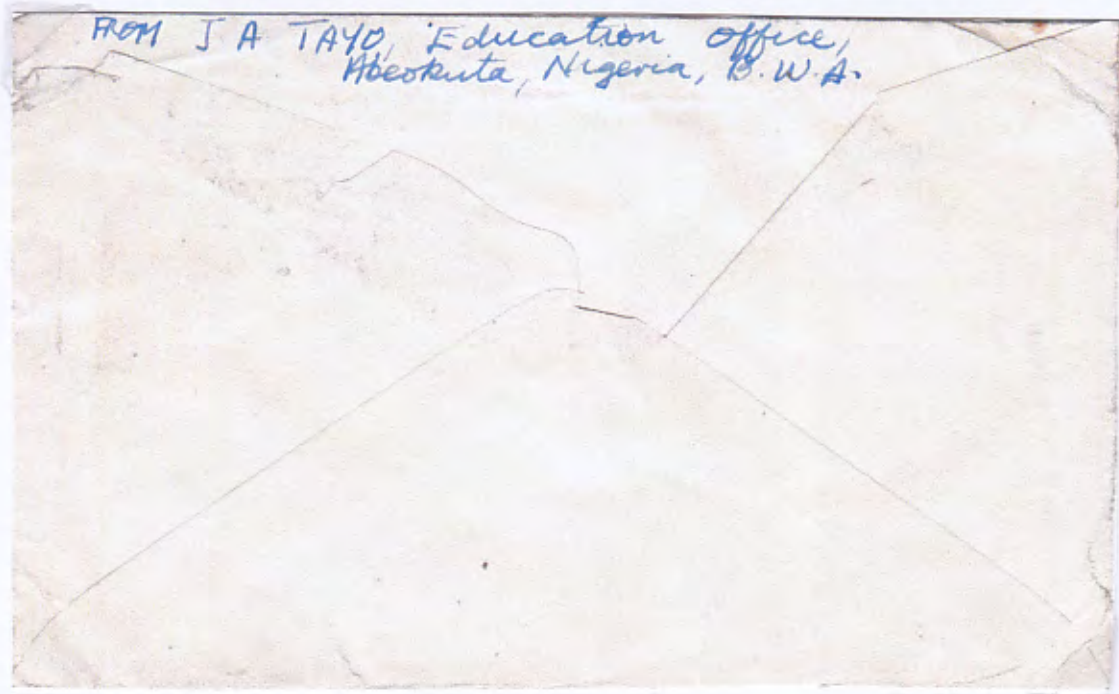
**R** ABEOKUTA  
No. 6976

From:-  
ELDERSHAW,  
P.O. Box 94,  
ABEOKUTA,  
NIGERIA.

ABEOKUTA NIGERIA

REGISTERED  
17 00 54  
LAGOS NIGERIA

4d rate



Registered Airmail

1/7<sup>d</sup> rate



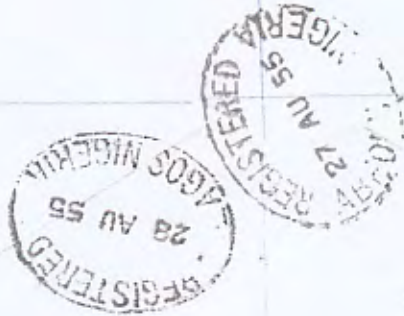
J. M. E. Okute  
203



The School of Accountancy  
2 West Regent Street.  
Glasgow, C. 2.



Jimmi Olupele  
P. O. BOX 111  
Ibara - Akure



BY AIR MAIL

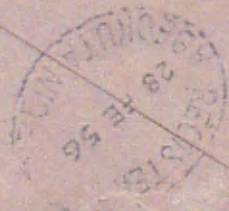
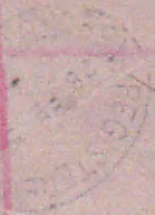
**R**  
268  
*MISS KITA*



THE CAREERS ADVISER,  
SCHOOL OF ACCOUNTANCY,  
REGENT HOUSE,  
GLASGOW, C. 2.  
GLASGOW.

GLASGOW.

*J. Y. Orpedell,  
Education Dept,  
Abadanta.*



FORCES  
AIRMAIL



E. G. Cooper Esq.  
14 Lime Tree Road,  
NORWICH

FORCES  
AIRMAIL



E. G. Cooper Esq.  
14 Lime Tree Road,  
NORWICH,  
Norfolk,  
ENGLAND.

بالبريد الجوي  
**AIR MAIL** 空郵  
PAR AVION



FORCES AIRMAIL

E. G. Cooper Esq.  
The Craft,  
14 Lime Tree Road,  
NORWICH,  
Nfk. ENGLAND

بالبريد الجوي  
**AIR MAIL** 空郵  
PAR AVION

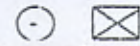


FORCES AIRMAIL

E. G. Cooper Esq.  
The Craft,  
14 Lime Tree Road,  
NORWICH,  
Nfk. ENGLAND.

**IMO - ABEOKUTA (IMO- B.O.)**

Station Post and Telegraph office closed 1 September 1931 and branch office opened instead.  
Listed in 1939 as a branch office



1.9.31- S.O. 30.9.60

4 40



D2 (22.2.36)-(13.5.58)



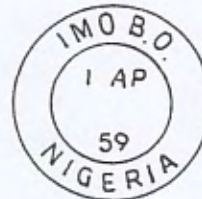
D3 (31.12.38)-(20.2.39)



D4 (12.6.50)-(25.7.50)



Sent 3.12.47  
D5 (8.9.58)-(5.10.59)



Sent 24.7.59  
D6 (9.10.57)-(1.4.59)



D7 (27.4.60)- S.U. 30.9.60



D8 (27.8.60)- S.U. 30.9.60

**Registered (R)**



R1 (30.4.36)-(14.6.52)  
Val x 2



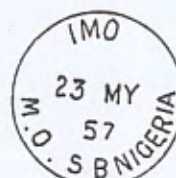
R2 (10.7.52)-(6.2.54)



R3 (20.8.54)-(2.10.59)



R4 (16.3.56)-(27.4.56)



R5 (23.5.57)

NIGERIA

IMO-ABEOKUTA



Cover to Kilmarnock posted on 16<sup>th</sup> January 1956 with two QE2 ½d adhesives franked with the 28mm diameter double circle which was known to be used between 1936 and 1958.

From 1<sup>st</sup> April 1954 a postal rate of 2½d per ounce was in place for Empire letters. Consequently, an unpaid mark, 'T' in 25mm diameter circle, was applied.

The green, boxed 'ID TO PAY' mark was applied on arrival in Great Britain with the postage due label.

BY AIRMAIL



The School of Accountancy,  
2 West Regent Street,  
GLASGOW.

Olusumbo Omotoso  
P. O. Box 210  
Abeokuta



BY AIR MAIL

**R** IMO ABEOKUTA  
No. 9644



Mr. Alfred Oliver,  
Sporting Forecast Limited,  
Manchester 13,  
England.



R. O. AKIYODE  
NATIONAL BANK OF NIGERIA LTD.  
IMO, ABEOKUTA WEST AFRICA.



EXPLAN

P.O. BOX 15

38 HOGHTON ST.  
SOUTHPORT  
LANCS.

**R** IMO ABEOKUTA  
No. 9915



**R** IMO ABEOKUTA  
No. 0162



SPORTING, FORECAST

95. SHARES PEARL

STREET, MANCHESTER

BY AIR EXPRESS



Sender J. L. Lawoye  
Local Govt Police Station



REGISTERED  
14 DE 57  
NIGERIA



Sender



IDRIS OLAOLUJOLUN

P.O. BOX 231

ABEOKUTA

BY AIR EXPRESS

For the personal attention  
of Mr. Oliver.

BY AIR MAIL



SPORTING FORECASTS LTD.,  
SHAKESPEARE STREET,  
MANCHESTER, 13.

**R** IMO ABEOKUTA  
No. 0207

From  
Chief S. ADE. FASHOLA  
P.O. Box 31 ABEOKUTA



BY AIR MAIL

Imo Abeokuta  
R 0906



The Sporting Forecast Limited,  
Shakespeare Street,  
Manchester 13,  
England.

R. O. AKIYODE

2 NATIONAL BANK OF NIGERIA  
LTD, ABEOKUTA WEST AFRICA.



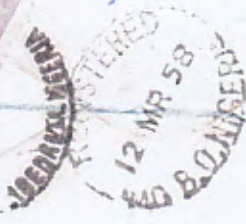
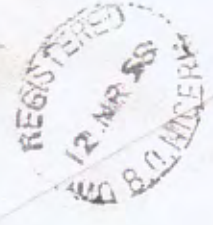
  
**BY AIR MAIL**  
PAR AVION



*The Sporting Forecasts Ltd*  
*Shakespeare Street,*  
*Manchester 13,*  
*England*

**R** IMO B.O.  
No. 4138

*From*  
*E. O. Shoyoye*  
*c/o Alabukun store*  
*Kemta*  
*ABUKUTA*



AIR MAIL



Imo Abokuto

~~Abokuto~~ Starting Forecast Ltd.,  
R 1210 95, Shakespeare Street,  
Manchester 13.

Senders

OYEWOLE SOMEFUN,  
P. O. Box 131,  
ABOKUTA, NIGERIA,  
B.W.A.





To

**R** ABEOKUTA  
No. 2424



THE ELLISONS,  
37-39 HIGH HOLBORN,  
LONDON  
W.C.1.

SENDER

MR. TAIWO KOLAWOLE  
P. O. Box 135  
IBARA ABEOKUTA

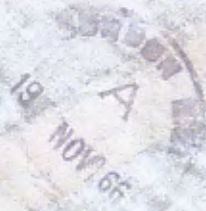


BY AIR MAIL  
PAR AVION

POST OFFICE  
**EXPRESS**  
DELIVERY



G. BRYCH LTD.,  
55 CHARTERHOUSE STREET,  
LONDON E.C. 1.





4. 5. 66.

BY AIR MAIL

NIGERIA  
4.254 - Drummer

Sony, I'm mucking you  
about I'm afraid. The  
earliest date for my return  
looks like being mid July.  
This means I  
teach in the after  
all! I was wondering  
whether my subconscious  
rebelled at the thought of  
open day. You know.



"C.M.S." (Nigeria) BC  
P.O. BOX 174 - L

PAR AVION  
BY AIR MAIL

Mr. & Mrs. V. Pugh,  
60, Marsham Rd.,  
Thornton Heath,  
Surrey,  
England



Elda, do you know the Raselle plant? Mrs. Bob Horton  
planted quite a lot when she was living there. It has a  
red bloom & its ~~had~~ very delicious when picked &  
cooked. The bloom is thick & waxy in appearance.  
It makes a delicious jam. If you do not know  
the plant, inquire & collect me a few seeds & send  
in your letter. I'd like to get that started in  
Nigeria. I'm sure it would do well here & they  
need it.

We went to Lagos last week to attend an Ag.  
Conference. Had a couple out for the week-end,  
who lives in Adadan. They brought out an old Nov. 13<sup>th</sup>  
Sunday paper & I read about a laughing youth killed 5 at  
Musa, Diji. This all world is so full of trouble. It just hurts me.  
With love & best wishes to each of you. Mary.

BY AIR MAIL  
PAR AVION  
AIR LETTER  
AEROGRAMME



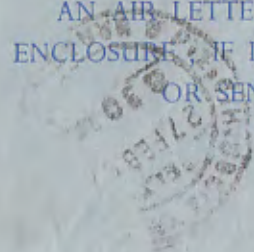
Mrs. ~~Elda~~ Coleman  
168-G P.E.C.H.S  
Karachi 29  
Pakistan

← Second fold here →

Sender's name and address:

Mrs. Albert Vann<sup>19</sup>  
M.A.N.R., Odeda Farm Inst.  
P.M. Bag 24  
Abokuta, W/Nigeria

AN AIR LETTER SHOULD NOT CONTAIN ANY  
ENCLOSURE. IF IT DOES IT WILL BE SURCHARGED  
OR SENT BY ORDINARY MAIL.







R  
 Abokuta H.O. 2  
 No. 60

MR A.G. JAMES,  
 UNITED AFRICA MOTORS LIMITED,  
 P.O. Box 1, UNITED AFRICA HOUSE,  
 BLACKFRIARS ROAD,  
 LONDON SE1 9UG.

FEE PAID.



J. A. OKEWOLE & SONS LTD.  
 Agent for:- NIGER MOTORS LTD.  
 P. O. Box 108 Ibara, Abokuta.



THEO O. SOMEFUN  
AUCTIONEER  
NO. 4 ABOABA ST  
IGBEIN ABEOKUTA  
NIGERIA, WEST AFRICA



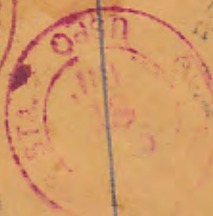
*Suite 515, Fifth Floor*

180 North Wabash Avenue

Chicago, Illinois 60601

U. S. A.

IMO ABEOKUTA 2  
No. 3



AIR MAIL



REGISTERED

THIS LETTER MUST BE GIVEN TO BE REGISTERED

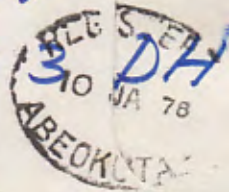
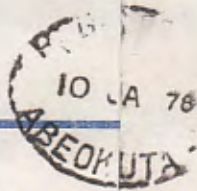
RATHU No. 26

OFFICE T. SIDE.



To

THE MANAGER  
LOMBARD NORTH CENTRAL LTD.  
17 BURTON STREET  
LONDON W1A 3DH  
ENGLAND



FEE PAID.

From



S. H. S. DE SILVA  
c/o N.C.C. LTD  
P.M.B. 5373  
IBADAN  
NIGERIA

BY AIR MAIL  
PAR AVION

R  
Abesokutu H.O. 2  
No. 611



THE DIRECTOR OF STUDIES,  
THE TRANS-WORLD TUTORIAL COLLEGE,  
P. O. BOX 42,  
JERSEY, BRITAIN.

AKINTAYO, CLEMENT OLANREWAJU (MR.)  
IWO GENERAL HOSPITAL,  
IWO.  
OYO STATE, NIGERIA.  
W/AFRICA



APR MAIL



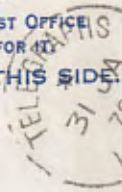
REGISTERED

THIS LETTER MUST BE GIVEN TO AN OFFICER OF THE POST OFFICE TO BE REGISTERED, AND A RECEIPT OBTAINED FOR IT. THE ADDRESS MUST BE WRITTEN ON THIS SIDE.

LETTER.

OFFICER OF THE POST OFFICE RECEIPT OBTAINED FOR IT. WRITTEN ON THIS SIDE.

IBARA BO  
691



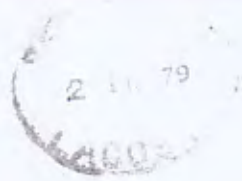
From

Mr. P. SIVAKANTHAN,  
ASST. CHIEF ENGINEER (ELECS),  
OGUN STATE WATER CORPORATION,  
P.M.B. 2074, ABEOKUTA,  
NIGERIA.

FEE PAID. NIGERIA.

To

THE DEPOST ACCOUNTS MANAGER,  
LOMBARD NORTH CENTRAL LTD,  
BANKING DIVISION,  
17 BRUTON STREET,  
LONDON W1A 3DH  
ENGLAND



  
BY AIR MAIL  
PAR AVION



Henrichsens Uldspinderi,  
Grundlagt 1885,  
7800 Skive,  
Denmark.

Olawale Adebajo,  
P. O. Box 220,  
Ibara, Abeokuta,  
Ogun State.

Ref.No.G.25/Vol.II/127



The Honourable Attorney-General  
and Commissioner for Justice,  
Ministry of Justice,  
Enugu,  
Anambra State.

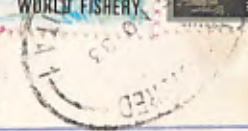
MINISTRY OF JUSTICE  
CONFIDENTIAL SECRETARY  
**DESPATCHED**  
21<sup>st</sup> APR 1987  
ORIGIN STATE: ABENOKUTA



JOHN KING  
30 KENSINGTON MALL GARDENS  
LONDON W. 14.  
UNITED - KINGDOM.

BY AIR

IBARA/OIG  
R016



To: DE LAURENCE  
180 NORTH WABASH AVENUE  
CHICAGO, ILLINOIS 60601  
U. S. A.

IBARA STATE HOTEL  
P.O. Box 80 Ibará, Abekuta, Ogun State Nigeria.

FROM: TUNDE AKINBO,  
P.O. BOX 98,  
IBARA, ABEKUTA,  
OGUN STATE  
NIGERIA.



**R** IBARA  
No. 185



REGISTERED

REGISTERED  
8 11 85

To:

MRS MARY BOWERS,  
SUBSCRIPTION DEPARTMENT  
BOOK COMPANY-WILTSHIRE,  
10 EAST STREET,  
WARMINSTER,  
WILTSHIRE  
ENGLAND



**REGISTERED LETTER**

THIS LETTER MUST BE GIVEN TO AN OFFICER OF THE POST OFFICE  
TO BE REGISTERED, AND A RECEIPT OBTAINED FOR IT.  
THE ADDRESS MUST BE WRITTEN ON THIS SIDE.



FROM:- OGUN STATE POLY.  
P.M.B. 2210  
ABEDUKUTA  
NIGERIA

REGISTERED  
8 11 85

REGISTERED  
8 11 85

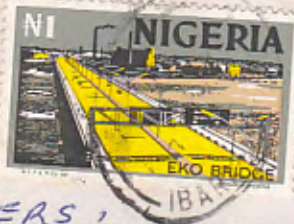
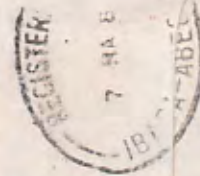
FEE PAID.



# REGISTERED LETTER

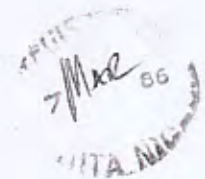
THIS LETTER MUST BE GIVEN TO AN OFFICER OF THE POST OFFICE TO BE REGISTERED, AND A RECEIPT OBTAINED FOR IT. THE ADDRESS MUST BE WRITTEN ON THIS SIDE.

OFFICER OF THE POST OFFICE RECEIPT OBTAINED FOR IT. WRITTEN ON THIS SIDE.



MRS MARY BOWERS,  
SUBSCRIPTION DEPARTMENT,  
Book Company - Wiltshire  
10 East Street,  
Warminster  
Wiltshire  
England.

FEE PAID.



Ogun State Polytechnic,  
P. M. B 2210  
ABEOKUTA  
OGUN STATE OF NIGERIA.



**Air Mail**

A5402  
877



GOTO HAIR STYLE  
30k



ABEOKUTA NIGERIA

THE SPIRITUAL ASSOCIATION  
GREAT BRITAIN,  
33, BELGRAVE SQUARE LONDON S.W.1.

419



SENDER Most Senior Apostle A. Adeyemi  
61, AGOTLA STREET (Idi-Oparun)  
GBAGURA - ABEOKUTA  
OGUN STATE  
NIGERIA

ABEOKUTA NIGERIA

ABEOKUTA NIGERIA

R-T-S

ROYAL MAIL  
POSTAGE PAID  
ILS 263  
GREAT BRITAIN

From: **SOON Educational Publications**  
Willington, Derby, England, DE65 6BN

PRINTED PAPER

4

Adeyamju Oluwa Segun Mathew  
Kajola Baptist Church  
(Miracle Arena)  
P.O.Box 1944  
Ogbomoso  
OYO STATE  
NIGERIA W. Africa

DEFAULTING CENTER  
SIGN

BOX NOT RENEWED

BOX NOT RENEWED

ROYAL MAIL  
POSTAGE PAID  
DERBY 263  
GREAT BRITAIN

From: **SOON Educational Publications**  
Willington, Derby, England, DE65 6BN

PRINTED PAPER

4

Adebessin Olufunke Adeola  
Christ African Church Igbore  
P.O. Box 2114  
IBARA ABEOKUTA  
OGUN STATE  
NIGERIA W. Africa

R-T-S



10

FIONA V. BARNARD SMITH  
SDM, P.O. BOX 9050  
ENUGU  
ENUGU STATE  
NIGERIA.

SOON  
PO Box 9050,  
Enugu,  
Enugu State,  
Nigeria.



SOON, P.O. BOX 9050,  
ENUGU, ENUGU STATE,  
NIGERIA. 400001

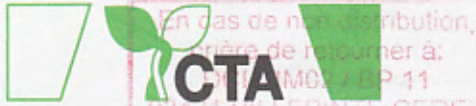


SOON,  
P.O. BOX 9050,  
ENUGU  
ENUGU STATE,  
NIGERIA.



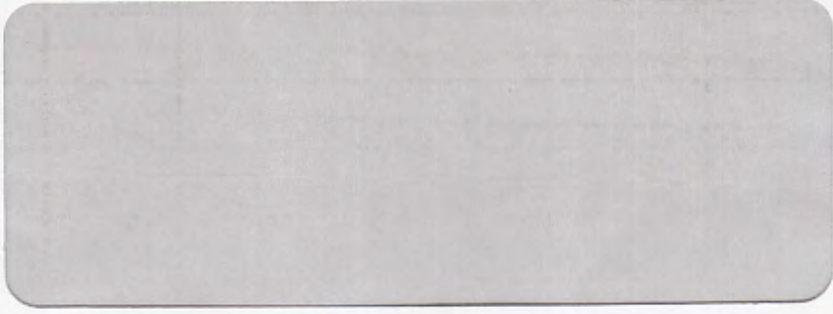
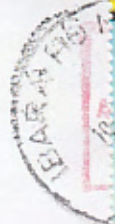
To:  
SOON EDUCATIONAL  
PUBLICATIONS  
WILINGTON, DERBY,  
ENGLAND, DE65  
6BN.





Postbus 380, 6700 AJ Wageningen  
Netherlands Pays-Bas

LEPERINTE GEDEX  
PRIORITY PRIORITY



15 FEB 2011

CTA  
Postbus 380  
6700 AJ Wageningen  
Pays-Bas / Netherlands.



RD44R100 N6700AJ



CTA

P.O.S.T.B.U.S 380  
6700 AJ WAGENINGEN  
PAY-BAS / NETHERLANDS

RD44R099 N6700AJ



CTA (PDS)  
Postbus 173  
6700 AD Wageningen  
The Netherlands.

ADZP 6700AD173



CTA (PDS)  
Postbus 173  
6700 AD Wageningen  
Pays-Bas / Netherlands



ADSUU 6700AD173



CTA (PDS)  
Postbus 173  
6700 AD Wageningen  
The Netherlands.

A11 #8521XOX#00#0000#

CTA (PDS),  
Postbus 173,  
6700 AD Wageningen,  
PAYS-BAS.

A05H 6700AD



CTA(PDS)  
Postbus 173  
6700 AD Wageningen  
The Netherlands.

A07CC 6700AD173

